

Screw connection with clamping yoke technology (W-Series)

PE terminal blocks

Universal range

A

WPE 1.5/R3.5

1.5 mm²

Protective earth terminal for TS 15



WPE 1.5/ZZ

1.5 mm²



Width/Height/Depth	mm
max. current / max. cond. cross-section	-/mm ²
Max. clamping range	mm ²

3.5 x 24.5 x 24	
/ 1.5	
0.13...1.5	

5.1 x 60 x 46.5	
/ 2.5	
0.13...2.5	

Technical data

Rated data	
for wire cross-section	mm ²
Rated voltage to adjoining terminal	V
Rated impulse withstand voltage to adjacent terminal	kV
Rated short-time current	
Pollution severity	
Gauge to IEC 60947-1 / UL 94 flammability rating	
Approvals	

IEC 60947-7-2				Ex eb II	
				C Gb	
IEC	UL	CSA	EN 60079-7		
1.5	AWG 26...18	AWG 26...18	2.5 mm ²		
400					
6					
				180 A (1.5 mm ²)	
				3	
				A1 / V-0	

IEC 60947-7-2				Ex eb II	
				C Gb	
IEC	UL	CSA	EN 60079-7		
1.5	AWG 26...14	AWG 26...14	2.5 mm ²		
800					
8					
				180 A (1.5 mm ²)	
				3	
				A1 / V-0	

Clamped conductors	
Solid / Stranded	mm ²
Flexible / Flexible with ferrule	mm ²
Tightening torque / Clamping screw	Nm
Tightening torque for fixing screw	
Stripping length / Blade size	mm

Rated connection			
0.5...1.5 / 1.5...1.5			
0.5...1.5 / 0.5...0.5			
0.3...0.3 / (M 2)			
7 / 0.4 x 2.5 mm			

Rated connection			
0.5...2.5 / 1.5...2.5			
0.5...1.5 / 0.5...1.5			
0.4...0.6 / (M 2.5)			
0.4...0.6 Nm			
7 / 0.6 x 3.5 mm			

Note

Ordering data

Version	Green/yellow green/yellow
---------	------------------------------

Type	Qty.	Order No.
WPE 1.5/R3.5	50	1798460000

Type	Qty.	Order No.
WPE 1.5/ZZ	50	1016500000

Note

Accessories

End plate / Partition plate	dark beige
End bracket	dark beige
Screwdriver	Screwdriver PH2
Marking tags	

Type	Qty.	Order No.
WAP WDU1.5/R3.5	20	1754190000
EW 15	50	0382860000
DEK 5/3.5 MC NE WS	500	1755270000
DEK 5/3.5 MM WS	1000	2007100000

Type	Qty.	Order No.
WAP 2.5-10	50	1050000000
WEW 35/2	50	1061200000
SDS 0.6X3.5X100	1	2749340000
DEK 5/5 MC NE WS	1000	1609801044
WS 12/5 MC NE WS	720	1609860000
DEK 5/5 MM WS	800	2007110000
WS 8/5 MM WS	800	2007150000

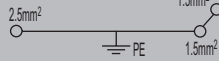
For detailed information on other accessories and application in the online catalogue

WPE 2.5/1.5/ZR

2.5 mm²



5.1 x 60 x 46.5
/ 4
0.05...4



IEC 60947-7-2 Ex eb II C Gb **Ex** II 2 G D

IEC	UL	CSA	EN 60079-7
2.5	AWG 26...12	AWG 26...12	2.5 mm ²
800			
8			
300 A (2.5 mm ²)			
3			
A3 / V-0			



Rated connection

0.5...4 / 1.5...4
0.5...4 / 0.5...2.5
0.4...0.6 / (M 2.5)
0.4...0.6 Nm
10 / 0.6 x 3.5 mm

Type	Qty.	Order No.
WPE 2.5/1.5/ZR	50	1016400000

Type	Qty.	Order No.
WAP 2.5-10	50	1050000000
WEW 35/2	50	1061200000
SDS 0.6X3.5X100	1	2749340000
DEK 5/5 MC NE WS	1000	1609801044
WS 12/5 MC NE WS	720	1609860000
DEK 5/5 MM WS	800	2007110000
WS 8/5 MM WS	800	2007150000

AKE 2.5

2.5 mm²



5.1 x 28 x 26
/ 4
0.13...4



IEC 60947-7-2 Ex eb II C Gb **Ex** II 2 G D

IEC	UL	CSA	EN 60079-7
2.5	AWG 26...12	AWG 26...12	4 mm ²
250			
4			
300 A (2.5 mm ²)			
3			
A3 / V-2			



Rated connection

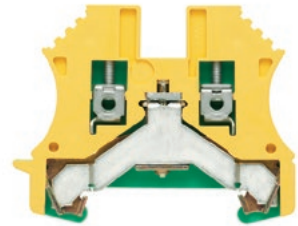
0.5...4 / 1.5...2.5
0.5...2.5 / 0.5...2.5
0.4...0.6 / (M 2.5)
7 / 3.0 x 0.5 mm

Type	Qty.	Order No.
AKE 2.5	100	1303360000

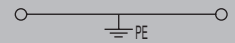
Type	Qty.	Order No.
WAP 2.5-10	50	1050000000
EW 15	50	0382860000
SDS 0.6X3.5X100	1	2749340000
DEK 5/5 MC NE WS	1000	1609801044

WPE 2.5

2.5 mm²



5.1 x 60 x 46.5
/ 4
0.05...4



IEC 60947-7-2 Ex eb II C Gb **Ex** II 2 G D

IEC	UL	CSA	EN 60079-7
2.5	AWG 26...12	AWG 26...12	2.5 mm ²
800			
8			
300 A (2.5 mm ²)			
3			
A3 / V-0			



Rated connection

0.5...4 / 0.5...4
0.5...4 / 0.5...2.5
0.4...0.6 / (M 2.5)
0.4...0.8 Nm
10 / 0.6 x 3.5 mm

Type	Qty.	Order No.
WPE 2.5	100	1010000000

Type	Qty.	Order No.
WAP 2.5-10	50	1050000000
WEW 35/2	50	1061200000
SDS 0.6X3.5X100	1	2749340000
DEK 5/5 MC NE WS	1000	1609801044
WS 12/5 MC NE WS	720	1609860000

Screw connection with clamping yoke technology (W-Series)

PE terminal blocks

Universal range

A

WPE 2.5N

2.5 mm²



Width/Height/Depth	mm
max. current / max. cond. cross-section	-/mm ²
Max. clamping range	mm ²

5.1 x 54 x 37	
/ 4	
0.05...4	

Technical data

Rated data	
for wire cross-section	mm ²
Rated voltage to adjoining terminal	V
Rated impulse withstand voltage to adjacent terminal	kV
Rated short-time current	
Pollution severity	
Gauge to IEC 60947-1 / UL 94 flammability rating	
Approvals	

IEC 60947-7-2 Ex eb II C Gb II 2 G D

IEC	UL	CSA	EN 60079-7
2.5	AWG 26...12	AWG 26...12	2.5 mm ²
500			
6			
300 A (2.5 mm ²)			
3			
A3 / V-0			



Rated connection	
Solid / Stranded	mm ²
Flexible / Flexible with ferrule	mm ²
Tightening torque / Clamping screw	Nm
Tightening torque for fixing screw	
Stripping length / Blade size	mm

Note

Ordering data

Version	Green/yellow green/yellow
---------	------------------------------

Note

Accessories

End plate / Partition plate	dark beige
End bracket	dark beige
Screwdriver	Screwdriver PH2
Marking tags	

Type	Qty.	Order No.
WPE 2.5N	50	1016200000

Type	Qty.	Order No.
WAP WDU2.5N/4N	50	1060000000
WEW 35/2	50	1061200000
SDS 0.6X3.5X100	1	2749340000
DEK 5/5 MC NE WS	1000	1609801044
WS 12/5 MC NE WS	720	1609860000
DEK 5/5 MM WS	800	2007110000
WS 8/5 MM WS	800	2007150000

For detailed information on other accessories and application in the online catalogue

AKE 4

4 mm²



Protective earth terminal for TS 15

6.1 x 27 x 29	
/ 4	
0.13...4	

IEC 60947-7-2 Ex eb II C Gb II 2 G D

IEC	UL	CSA	EN 60079-7
4	AWG 26...12	AWG 26...12	4 mm ²
500			
6			
480 A (4 mm ²)			
3			
A3 / V-0			



Rated connection	
Solid / Stranded	mm ²
Flexible / Flexible with ferrule	mm ²
Tightening torque / Clamping screw	Nm
Tightening torque for fixing screw	
Stripping length / Blade size	mm

Note

Type	Qty.	Order No.
AKE 4	100	0380260000

Type	Qty.	Order No.
AP AKZ4	20	0294460000
EW 15	50	0382860000
SDS 0.6X3.5X100	1	2749340000
DEK 5/6 MC NE WS	1000	1609820000
DEK 5/6 MM WS	600	2007120000

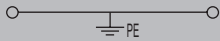
For detailed information on other accessories and application in the online catalogue

WPE 4

4 mm²



6.1 x 56 x 46.5
/ 6
0.13...6



IEC 60947-7-2 Ex eb II C Gb II 2 G D

IEC	UL	CSA	EN 60079-7
4	AWG 26...10	AWG 26...10	4 mm ²
800			
8			
480 A (4 mm ²)			
3			
A4 / V-0			

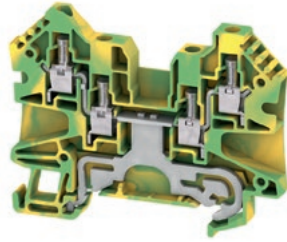


Rated connection

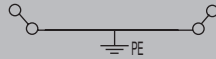
0.5...6 / 0.5...6
0.5...6 / 0.5...4
0.5...1 / (M 3)
0.4...0.8 Nm
10 / 0.6 x 3.5 mm

WPE 4/ZZ

4 mm²



6.1 x 70 x 53
/ 6
0.05...6



IEC 60947-7-2 Ex eb II C Gb II 2 G D

IEC	UL	CSA	EN 60079-7
4	AWG 30...10	AWG 30...10	4 mm ²
800			
8			
480 A (4 mm ²)			
3			
A4 / V-0			

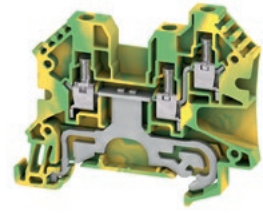


Rated connection

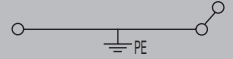
0.5...6 / 0.5...4
0.5...4 / 0.5...4
0.5...0.8 / (M 3)
10 / 0.6 x 3.5 mm

WPE 4/ZR

4 mm²



6.1 x 63.5 x 52.8
/ 6
0.05...6



IEC 60947-7-2 Ex eb II C Gb II 2 G D

IEC	UL	CSA	EN 60079-7
4	AWG 30...10	AWG 30...10	4 mm ²
800			
8			
480 A (4 mm ²)			
3			
A4 / V-0			



Rated connection

0.5...6 / 0.5...4
0.5...4 / 0.5...4
0.5...0.8 / (M 3)
10 / 0.6 x 3.5 mm

Type	Qty.	Order No.
WPE 4	100	1010100000

Type	Qty.	Order No.
WPE 4/ZZ	50	1905130000

Type	Qty.	Order No.
WPE 4/ZR	50	1905120000

Type	Qty.	Order No.
WEW 35/2	50	1061200000
SDS 0.6X3.5X100	1	2749340000
DEK 5/6 MC NE WS	1000	1609820000
WS 8/6 MM WS	600	2007160000
DEK 5/6 MM WS	600	2007120000

Type	Qty.	Order No.
WAP WDU/WTR4/ZZ	50	1905150000
WEW 35/2	50	1061200000
SDS 0.6X3.5X100	1	2749340000
DEK 5/6 MC NE WS	1000	1609820000
WS 8/6 MM WS	600	2007160000
DEK 5/6 MM WS	600	2007120000

Type	Qty.	Order No.
WAP WDU/WTR4/ZR	50	1905070000
WEW 35/2	50	1061200000
SDS 0.6X3.5X100	1	2749340000
DEK 5/6 MC NE WS	1000	1609820000
WS 8/6 MM WS	600	2007160000
DEK 5/6 MM WS	600	2007120000



Screw connection with clamping yoke technology (W-Series)

PE terminal blocks

Universal range

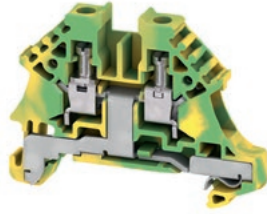
A

WPE 4N

4 mm²

WPE 6

6 mm²



Width/Height/Depth	mm
max. current / max. cond. cross-section	-/mm ²
Max. clamping range	mm ²

6.1 x 50 x 37	
/ 6	
0.13...6	

7.9 x 56 x 46.5	
/ 10	
0.08...10	

Technical data

Rated data	
for wire cross-section	mm ²
Rated voltage to adjoining terminal	V
Rated impulse withstand voltage to adjacent terminal	kV
Rated short-time current	
Pollution severity	
Gauge to IEC 60947-1 / UL 94 flammability rating	
Approvals	

IEC 60947-7-2 Ex eb II C Gb II 2 G D

IEC	UL	CSA	EN 60079-7
4	AWG 26...10	AWG 26...10	4 mm ²
500			
6			
480 A (4 mm ²)			
3			
A3 / V-0			

IEC 60947-7-2 Ex eb II C Gb II 2 G D

IEC	UL	CSA	EN 60079-7
6	AWG 20...8	AWG 20...8	6 mm ²
800			
8			
720 A (6 mm ²)			
3			
A5 / V-0			

Clamped conductors	
Solid / Stranded	mm ²
Flexible / Flexible with ferrule	mm ²
Tightening torque / Clamping screw	Nm
Tightening torque for fixing screw	
Stripping length / Blade size	mm

Rated connection	
0.5...6 / 1.5...6	
0.5...4 / 0.5...4	
0.5...1 / (M 3)	
10 / 0.6 x 3.5 mm	

Rated connection	
0.5...10 / 1.5...10	
0.5...10 / 0.5...6	
0.8...1.3 / (M 3)	
0.5...1.0 Nm	
12 / 4.0 x 0.8 mm	

Note

Ordering data

Version	green/yellow
Note	

Type	Qty.	Order No.
WPE 4N	50	1042700000

Type	Qty.	Order No.
WPE 6	50	1010200000

Accessories

End plate / Partition plate	dark beige
End bracket	dark beige, screwable
Screwdriver	Screwdriver PH2 Standard
Marking tags	
PEN bridge	

Type	Qty.	Order No.
WAP WDU2.5N/4N	50	1060000000
WEW 35/2	50	1061200000
SDS 0.6X3.5X100	1	2749340000
DEK 5/6 MC NE WS	1000	1609820000
WS 12/6 MC NE WS	600	1609900000
DEK 5/6 MM WS	600	2007120000

Type	Qty.	Order No.
WEW 35/2	50	1061200000
SDS 0.8X4.0X100	1	2749360000
DEK 5/8 MC NE WS	800	1856740000
WS 8/6 MM WS	600	2007160000
DEK 5/6 MM WS	600	2007120000

For detailed information on other accessories and application in the online catalogue

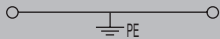
For detailed information on other accessories and application in the online catalogue

WPE 10

10 mm²



9.9 x 56 x 46.5
/ 16
1.31...16



IEC 60947-7-2 Ex eb II C Gb II 2 G D

IEC	UL	CSA	EN 60079-7
10	AWG 16...6	AWG 16...6	10 mm ²
800			
8			
1200 A (10 mm ²)			
3			
B6 / V-0			



Rated connection

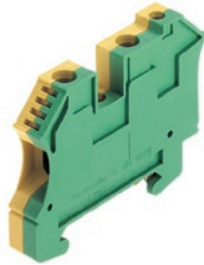
1.5...16 / 1.5...16
1.5...16 / 1.5...16
1.2...2.4 / (M 4)
0.5...1.0 Nm
12 / 1.0 x 5.5 mm

Type	Qty.	Order No.
WPE 10	50	1010300000

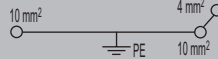
Type	Qty.	Order No.
WEW 35/2	50	1061200000
SDS 1.0X5.5X150	1	2749380000
DEK 5/5 MC NE WS	1000	1609801044
WS 12/6.5 MC NE WS	540	1609920000
WQB-PEN 10	57 A 10	1060300000

WPE 10/ZR

10 mm²



9.9 x 66 x 49
/ 16
1.31...16



IEC 60947-7-2

IEC	UL	CSA	EN 60079-7
10	AWG 16...6	AWG 14...6	
1000			
8			
1200 A (10 mm ²)			
3			
B6, A4 / V-0			



Rated connection

1.5...16 / 1.5...16
1.5...16 / 1.5...16
1.2...1.9 / (M 4)
0.5...1.0 Nm
12 / 0.6 x 3.5 mm

Type	Qty.	Order No.
WPE 10/ZR	50	1042500000

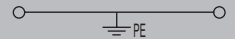
Type	Qty.	Order No.
WEW 35/2	50	1061200000
SDS 0.6X3.5X100	1	2749340000
DEK 5/5 MC NE WS	1000	1609801044
WS 12/6.5 MC NE WS	540	1609920000
WQB-PEN 10	57 A 10	1060300000

WPE 16

16 mm²



11.9 x 56 x 62.5
/ 25
1.5...25



IEC 60947-7-2 Ex eb II C Gb II 2 G D

IEC	UL	CSA	EN 60079-7
16	AWG 14...4	AWG 14...6	16 mm ²
1000			
8			
1920 A (16 mm ²)			
3			
B7 / V-0			



Rated connection

1.5...16 / 1.5...25
1.5...25 / 1.5...16
2...3.6 / (M 5)
1.2...2.4 Nm
16 / 1.0 x 5.5 mm

Type	Qty.	Order No.
WPE 16	50	1010400000

Type	Qty.	Order No.
WEW 35/1	50	1059000000
SDS 1.0X5.5X150	1	2749380000
DEK 5/5 MC NE WS	1000	1609801044
WS 12/6.5 MC NE WS	540	1609920000
WQB-PEN 16	76 A 10	1060200000



Screw connection with clamping yoke technology (W-Series)

PE terminal blocks

Universal range

A

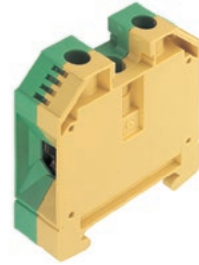
WPE 16N

16 mm²



WPE 35

35 mm²



Width/Height/Depth	mm
max. current / max. cond. cross-section	-/mm ²
Max. clamping range	mm ²

12 x 56 x 46.5	
/ 25	
1.5...25	

16 x 56 x 62.5	
/ 35	
2.5...35	

Technical data

Rated data	
for wire cross-section	mm ²
Rated voltage to adjoining terminal	V
Rated impulse withstand voltage to adjacent terminal	kV
Rated short-time current	
Pollution severity	
Gauge to IEC 60947-1 / UL 94 flammability rating	

IEC 60947-7-2			
IEC	UL	CSA	EN 60079-7
16	AWG 14...6	AWG 14...6	
690			
6			
1920 A (16 mm ²)			
3			
B7 / V-0			

IEC 60947-7-2				Ex eb II	C Gb	II 2 G D
IEC	UL	CSA	EN 60079-7			
35	AWG 12...2	AWG 12...2	35 mm ²			
800						
8						
4200 A (35 mm ²)						
3						
B8 / V-0						

Clamped conductors	
Solid / Stranded	mm ²
Flexible / Flexible with ferrule	mm ²
Tightening torque / Clamping screw	Nm
Tightening torque for fixing screw	
Stripping length / Blade size	mm

Rated connection	
1.5...16 / 1.5...25	
1.5...16 / 4...16	
1.2...2.4 / (M 4)	
0.5...1.0 Nm	
12 / 1.0 x 5.5 mm	

Rated connection	
2.5...50 / 2.5...50	
2.5...35 / 2.5...35	
4...5 / (M 6)	
1.2...2.4 Nm	
18 / 6.5 x 1.2 mm	

Note

Ordering data

Version	
	Green/yellow
	green/yellow

Type	Qty.	Order No.
WPE 16N	50	1019100000

Type	Qty.	Order No.
WPE 35	25	1010500000

Note

Accessories

PEN bridge	
End bracket	dark beige dark beige, screwable
Screwdriver	Standard
Marking tags	

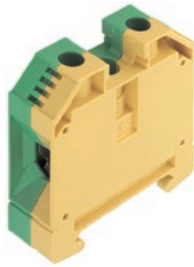
Type	Qty.	Order No.
WQV 16N-PEN BL	76 A 10	1071360000
WEW 35/2	50	1061200000
SDS 1.0X5.5X150	1	2749380000
DEK 5/5 MC NE WS	1000	1609801044
WS 12/6.5 MC NE WS	540	1609920000

Type	Qty.	Order No.
WQB-PEN 35	135 A 10	1060100000
WEW 35/1	50	1059000000
SDS 1.2X6.5X150	1	2749390000
DEK 5/5 MC NE WS	1000	1609801044
WS 12/6.5 MC NE WS	540	1609920000

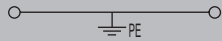
For detailed information on other accessories and application in the online catalogue

WPE 35/IKSC

35 mm²



16 x 56 x 62.5
/ 35
2.5...35



IEC 60947-7-2 Ex eb II C Gb II 2 G D

IEC	UL	CSA	EN 60079-7
35	AWG 12...1	AWG 12...2	35 mm ²
800			
8			
4200 A (35 mm ²)			
3			
B8 / V-0			



Rated connection

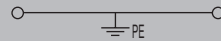
2.5...16 / 2.5...35
2.5...35 / 2.5...35
5 / (M 6)
1.2...2.4 Nm
18 / S4 (DIN 6911)

WPE 35N

35 mm²



16 x 66 x 50.5
/ 50
2.5...50



IEC 60947-7-2 Ex eb II C Gb II 2 G D

IEC	UL	CSA	EN 60079-7
35	AWG 12...2		35 mm ²
400			
6			
4200 A (35 mm ²)			
3			
B8 / V-0			



Rated connection

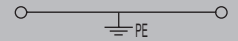
2.5...16 / 2.5...50
2.5...35 / 2.5...35
4...5 / (M 6)
1.2...2.4 Nm
18 / 6.5 x 1.2 mm

WPE 50N

50 mm²



18.5 x 71 x 69.6
/ 70
5.26...70



IEC 60947-7-2 Ex eb II C Gb II 2 G D

IEC	UL	CSA	EN 60079-7
50	AWG 10...0	AWG 14...0	50 mm ²
1000			
8			
6000 A (50 mm ²)			
3			
B10 / V-0			



Rated connection

10...16 / 10...70
10...50
4...6 / (M 6)
3.0...4.0 Nm
24 / S4 (DIN 6911)

Type	Qty.	Order No.
WPE 35/IKSC	25	1012600000

Type	Qty.	Order No.
WPE 35N	20	1717740000

Type	Qty.	Order No.
WPE 50N	10	1846040000

Type	Qty.	Order No.
WQB-PEN 35	135 A 10	1060100000
WEW 35/1	50	1059000000
SDS 1.2X6.5X150	1	2749390000
DEK 5/5 MC NE WS	1000	1609801044
WS 12/6.5 MC NE WS	540	1609920000

Type	Qty.	Order No.
WEW 35/2	50	1061200000
SDS 1.2X6.5X150	1	2749390000
DEK 5/5 MC NE WS	1000	1609801044
WS 12/6.5 MC NE WS	540	1609920000

Type	Qty.	Order No.
WQV PEN 50N	150 A 5	9201610000
WEW 35/1	50	1059000000
SKS 2,0-8,0 MR	1	9008870000
DEK 5/8 MC NE WS	800	1856740000
WS 12/6.5 MC NE WS	540	1609920000



Screw connection with clamping yoke technology (W-Series)

PE terminal blocks

Universal range

A

WPE 70N/35

70 mm²

WPE 95N/120N

95 mm²



Width/Height/Depth	mm
max. current / max. cond. cross-section	-/mm ²
Max. clamping range	mm ²

20.5 x 75 x 85	
/ 95	
16...95	

27 x 91 x 90	
/ 150	
16...150	

Technical data

Rated data	
for wire cross-section	mm ²
Rated voltage to adjoining terminal	V
Rated impulse withstand voltage to adjacent terminal	kV
Rated short-time current	
Pollution severity	
Gauge to IEC 60947-1 / UL 94 flammability rating	
Approvals	

IEC 60947-7-2 Ex eb II C Gb II 2 G D

IEC	UL	CSA	EN 60079-7
70	AWG 6...0	AWG 6...0	70 mm ²
1000			
8			
8400 A (70 mm ²)			
3			
B11 / V-0			

IEC 60947-7-2 Ex eb II C Gb II 2 G D

IEC	UL	CSA	EN 60079-7
95	AWG 4...0	AWG 4...0	120 mm ²
1000			
8			
11400 A (95 mm ²)			
3			
B13 / V-0			

Clamped conductors	
Solid / Stranded	mm ²
Flexible / Flexible with ferrule	mm ²
Tightening torque / Clamping screw	Nm
Tightening torque for fixing screw	
Stripping length / Blade size	mm

Rated connection	
16...16 / 16...95	
16...70 / 16...50	
8...12 / (M 8)	
2.0...4.0 Nm	
22 / S6 (DIN 6911)	

Rated connection	
16...16 / 16...150	
16...120	
16...20 / (M 10)	
3.0...4.0 Nm	
27 / S6 (DIN 6911)	

Note

Ordering data

Version	Green/yellow green/yellow
---------	------------------------------

Type	Qty.	Order No.
WPE 70N/35	10	9512200000

Type	Qty.	Order No.
WPE 95N/120N	5	1846030000

Note

Accessories

PEN bridge	
End bracket	
	dark beige dark beige, screwable
Screwdriver	
	Standard
Marking tags	

Type	Qty.	Order No.
WQV 70N-PEN	192 A	5 9525840000
WEW 35/1	50	1059000000
SKS 2,0-8,0 MR	1	9008870000
DEK 5/5 MC NE WS	1000	1609801044
WS 12/6.5 MC NE WS	540	1609920000

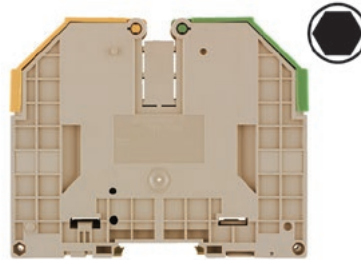
Type	Qty.	Order No.
WQV PEN 95N/120N	269 A	5 9201630000
WEW 35/1	50	1059000000
SKS 2,0-8,0 MR	1	9008870000
DEK 5/5 MC NE WS	1000	1609801044
WS 12/6.5 MC NE WS	540	1609920000

For detailed information on other accessories and application in the online catalogue

WPE 70/95

95 mm²

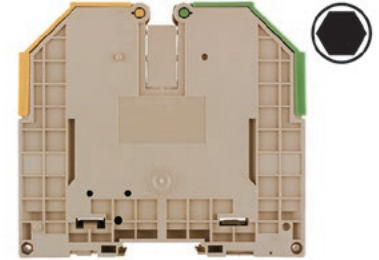
Conductor can be inserted from above / leaf spring



WPE 120/150

120 mm²

Conductor can be inserted from above / leaf spring



Width/Height/Depth	mm
max. current / max. cond. cross-section	-/mm ²
Max. clamping range	mm ²

27 x 132 x 107	
/ 120	
13.3...120	

32 x 132 x 117	
/ 150	
33.62...150	

Technical data

Rated data	
for wire cross-section	mm ²
Rated voltage to adjoining terminal	V
Rated impulse withstand voltage to adjacent terminal	kV
Rated short-time current	
Pollution severity	
Gauge to IEC 60947-1 / UL 94 flammability rating	
Approvals	
Clamped conductors	
Solid / Stranded	mm ²
Flexible / Flexible with ferrule	mm ²
Tightening torque / Clamping screw	Nm
Tightening torque for fixing screw	
Stripping length / Blade size	mm

IEC 60947-7-2

IEC	UL	CSA	EN 60079-7
95	AWG 6...0	AWG 6...0	95 mm ²
1000			
8			
11400 A (95 mm ²)			
3			
B12 / V-0			

Ex eb II
C Gb II 2 G D

Rated connection	
16...16 / 16...120	
16...95 / 35...50	
6...12 / (M 8)	
3.0...6.0 Nm	
30 / S6 (DIN 6911)	

IEC 60947-7-2

IEC	UL	CSA	EN 60079-7
120	AWG 2...250	AWG 2...250	150 mm ²
1000			
8			
14400 A (120 mm ²)			
3			
B13 / V-0			

Ex eb II
C Gb II 2 G D

Rated connection	
35...150 / 35...150	
35...150 / 35...50	
10...20 / (M 10)	
3.0...6.0 Nm	
35 / S6 (DIN 6911)	

Note

Ordering data

Version	green/yellow
Note	

Type	Qty.	Order No.
WPE 70/95	10	1037300000

Type	Qty.	Order No.
WPE 120/150	10	1019700000

Accessories

PEN bridge	
End bracket	dark beige, screwable
Marking tags	
Screwdriver	Standard

Type	Qty.	Order No.
WQV 70/95-PEN	232 A	5 1072300000
WEW 35/1	50	1059000000
DEK 5/5 MC NE WS	1000	1609801044
WS 12/6.5 MC NE WS	540	1609920000
SKS 2,0-8,0 MR	1	9008870000

Type	Qty.	Order No.
WQV 120-PEN	292 A	5 1072400000
WEW 35/1	50	1059000000
DEK 5/5 MC NE WS	1000	1609801044
WS 12/6.5 MC NE WS	540	1609920000
SKS 2,0-8,0 MR	1	9008870000

For detailed information on other accessories and application in the online catalogue

