

Reliability connects

Klippon® Connect sets standards with clamping yoke technology

Whatever your requirements for the panel: our screw connection system with patented clamping yoke technology ensures the ultimate in contact safety. You can use both screw-in and plug-in cross-connections for potential distribution. Two conductors of the same diameter can also be connected in a single terminal point in accordance with UL1059. The screw connection has long been an established connection element to meet exacting demands in terms of reliability and functionality. And our W-Series is still setting standards.

Our promise

The high reliability and variety of designs of the terminal blocks with clamping yoke connections make planning easier and optimises operational safety. Klippon® Connect provides a proven response to a range of different requirements.

Overview



You can rely on it: thanks to the range of models and real flexibility, our terminal blocks with clamping yoke technology can be used in a wide range of different applications.

Universal application:

Numerous national and international approvals and qualifications in accordance with a variety of application standards make the W-series a universal connection solution, especially in harsh conditions.

Varied product assortment with wide clamping range:

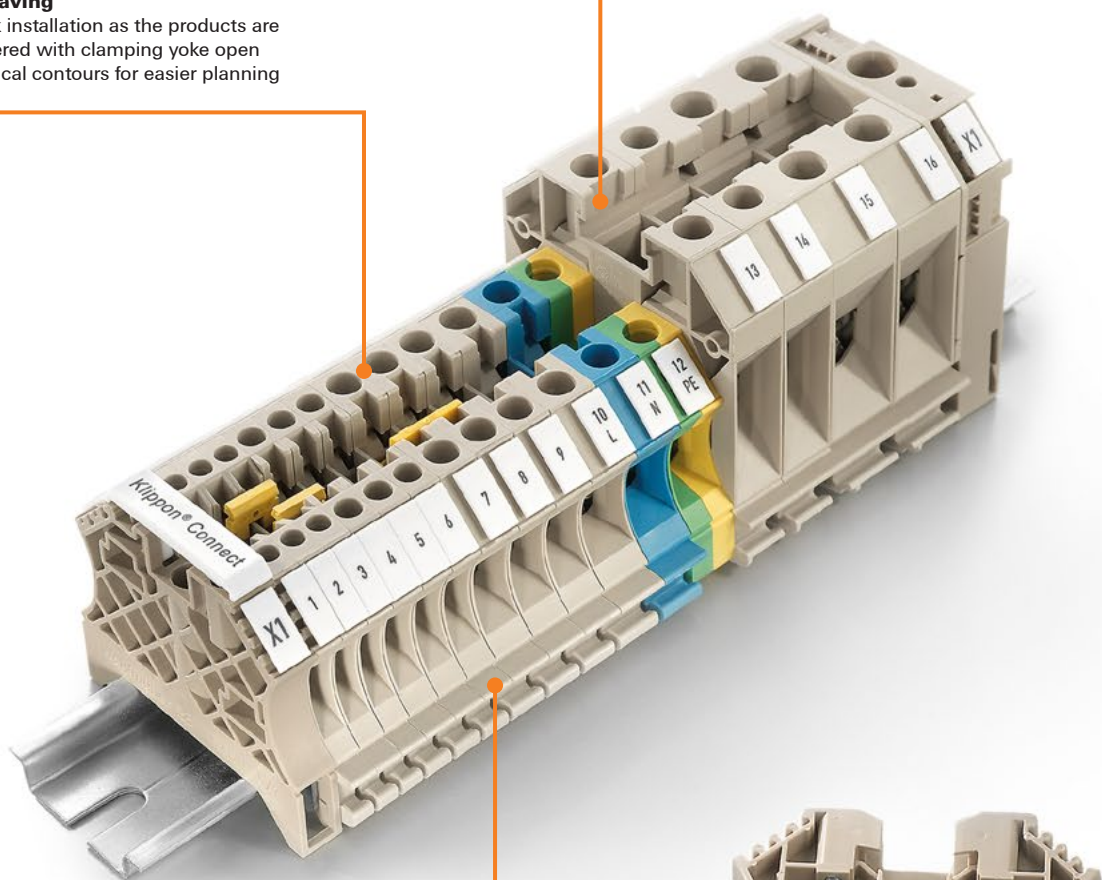
Our terminal blocks with clamping yoke technology are available in both standard and compact designs. The compact design covers wire cross-sections from 0.05 mm² to 150 mm² and helps save space in the panel. The standard version covers conductor cross sections of up to 240 mm². The identical contours of the terminal blocks make configuration easier and reduces the quantity of accessories required.

Time saving

- Quick installation as the products are delivered with clamping yoke open
- Identical contours for easier planning

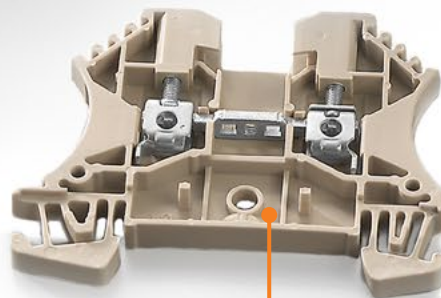
Space saving

- Small "W-Compact" size saves space in the panel
- Two conductors can be connected for each contact point



Flexibility

- The maintenance-free connection means the clamping screw does not need to be re-tightened
- Can be clipped to or removed from the terminal rail in either direction



Safety

- The clamping yoke properties compensate for temperature-indexed changes to the conductor to prevent loosening
- Vibration-resistant connectors – ideal for applications in harsh conditions
- Protection against incorrect conductor entry
- Copper current bar for low voltages, clamping yoke and screw made of hardened steel
- Precise clamping yoke and current bar design for safe contact with even the smallest of conductors

Screw connection with clamping yoke technology (W-Series)
Feed-through terminal blocks

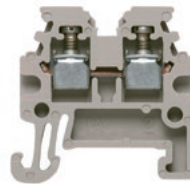
Universal range

A

WDU 1.5/R 3.5

1.5 mm²

Feed-through terminal for TS 15



Width/Height/Depth	mm
max. current / max. cond. cross-section	A/mm ²
Max. clamping range	mm ²

3.5 x 24.5 x 24	
17.5 / 1.5	
0.13...1.5	

Technical data

Rated data	
Rated voltage	V
Rated current	A
for wire cross-section	mm ²
Rated impulse withstand voltage / Pollution severity	
Gauge to IEC 60947-1 / UL 94 flammability rating	
Approvals	
Clamped conductors	
Solid / Stranded	mm ²
Flexible / Flexible with ferrule	mm ²
Tightening torque / Clamping screw	Nm
Stripping length / Blade size	mm/-
2 conductors with same cross-section (H05V/H07V)	
Solid / Stranded	-
Flexible / Flexible with ferrule	mm ²
Note	

IEC 60947-7-1				Ex eb II	
				C Gb	
IEC	UL	CSA	EN 60079-7		
400	300	300	275		
17.5	15	10	15		
1.5	AWG 26...14	AWG 26...14	1.5 mm ²		
				4 kV / 3	
				A1 / V-0	
				DEMKO14ATEX1338U	
Rated connection		Further connection			
0.5...1.5 / 1.5...1.5					
0.5...1.5 / 0.5...0.5					
0.3...0.3 / (M 2)					
7 / 0.4 x 2.5 mm					
0.5...0.75 / 0.5...0.5					

Ordering data

Version	
	dark beige
	beige
	Blue
Note	

Type	Qty.	Order No.
WDU 1.5/R3.5	100	1753280000
WDU 1.5/R3.5 BL	100	1754170000

Accessories

Screwable cross-connection	
	2-pole
	10-pole
End plate / Partition plate	
	dark beige
	Blue
End bracket	
	dark beige
Testing / Checking	
	Test plug
	Socket
Marking tags	
Plug-in cross-connection	
	2-pole
	10-pole

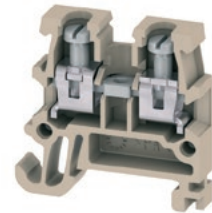
Type	Qty.	Order No.
WAP WDU1.5/R3.5	20	1754190000
EW 15	50	0382860000
DEK 5/3.5 MC NE WS	500	1755270000
DEK 5/3.5 MM WS	1000	2007100000
ZQV 1.5N/R3.5/2 GE	17.5 A 50	1754210000
ZQV 1.5N/R3.5/10 GE	17.5 A 20	1754290000

For detailed information on other accessories and application in the online catalogue

AKZ 1.5

1.5 mm²

Feed-through terminal for TS 15



5.1 x 24.8 x 24	
24 / 2.5	
0.21...2.5	

IEC 60947-7-1				Ex eb II	
				C Gb	
IEC	UL	CSA	EN 60079-7		
250	150	300	220		
17.5	15	10	17.5		
1.5	AWG 22...14	AWG 24...16	2.5 mm ²		
				4 kV / 3	
				A1 / V-2	
				TUEV18ATEX8221U	
Rated connection		Further connection			
0.5...2.5 / 1.5...1.5					
0.5...1.5 / 0.5...1.5					
0.4...0.6 / (M 2.5)					
7 / 3.0 x 0.5 mm					

Type	Qty.	Order No.
AKZ 1.5	100	0340460000
AKZ 1.5 BL	100	0340480000

Type	Qty.	Order No.
Q 2 AKZ1.5	24 A 50	0368200000
Q 10 AKZ1.5	24 A 20	0368500000
AP AKZ1.5	50	0340560000
AP AKZ1.5 BL	50	0340580000
EW 15	50	0382860000
PS 2.3 RT	20 mA 20	0180400000
STB 8.5/D4/2.3/M2.5 AKZ	50	0215700000
DEK 5/5 MC NE WS	1000	1609801044

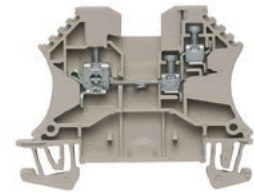
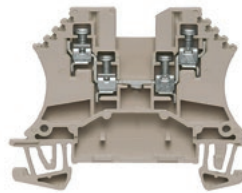
For detailed information on other accessories and application in the online catalogue

WDU 1.5/ZZ

1.5 mm²

WDU 2.5/1.5/ZR

2.5 mm²



Width/Height/Depth	mm
max. current / max. cond. cross-section	A/mm ²
Max. clamping range	mm ²

5.1 x 60 x 46.5	23 / 2.5	0.13...2.5
-----------------	----------	------------

5.1 x 60 x 46.5	32 / 4	0.05...4
-----------------	--------	----------

Technical data

Rated data	
Rated voltage	V
Rated current	A
for wire cross-section	mm ²
Rated impulse withstand voltage / Pollution severity	
Gauge to IEC 60947-1 / UL 94 flammability rating	
Approvals	
Clamped conductors	
Solid / Stranded	mm ²
Flexible / Flexible with ferrule	mm ²
Tightening torque / Clamping screw	Nm
Stripping length / Blade size	mm/-
2 conductors with same cross-section (H05V/H07V)	
Solid / Stranded	mm ²
Flexible / Flexible with ferrule	mm ²
Note	

IEC 60947-7-1	UL	CSA	EN 60079-7
800	300	300	550
17.5	25	10	17.5
1.5	AWG 26...12	AWG 26...12	2.5 mm ²
8 kV / 3			
A1 / V-0			
CE, KEUR, UKCA, DEMKO14ATEX1338U			
Rated connection	Further connection		
0.5...2.5 / 0.5...2.5	0.5...2.5 / 0.5...2.5		
0.5...1.5 / 0.5...1.5	0.5...1.5 / 0.5...1.5		
0.4...0.6 / (M 2.5)	0.4...0.6 / (M 2.5)		
7 / 0.6 x 3.5 mm	7 / 0.6 x 3.5 mm		
0.5...2.5	0.5...2.5		
0.5...1 / 0.5...0.75	0.5...1 / 0.5...0.75		

IEC 60947-7-1	UL	CSA	EN 60079-7
800	300	300	550
24	20	20	17.5
2.5	AWG 30...12	AWG 26...14	2.5 mm ²
8 kV / 3			
A3, A1 / V-0			
CE, KEUR, UKCA, DEMKO14ATEX1338U			
Rated connection	Further connection		
0.5...4 / 1.5...4	0.5...2.5 / 0.5...2.5		
0.5...4 / 0.5...2.5	0.5...1.5 / 0.5...1.5		
0.4...0.6 / (M 2.5)	0.4...0.6 / (M 2.5)		
10 / 0.6 x 3.5 mm	7 / SD 0.6 x 3.5		
0.5...2.5	0.5...2.5		
0.5...1.5 / 0.5...1.5	0.5...1.5 / 0.5...1.5		

Ordering data

Version	
dark beige	
Blue	
Note	

Type	Qty.	Order No.
WDU 1.5/ZZ	100	1031400000
WDU 1.5/ZZ BL	100	1031480000

Type	Qty.	Order No.
WDU 2.5/1.5/ZR	100	1024700000
WDU 2.5/1.5/ZR BL	100	1024780000

Accessories

Plug-in cross-connection	
2-pole	
10-pole	
Screwable cross-connection	
2-pole	
10-pole	
End plate / Partition plate	
dark beige	
Blue	
dark beige	
Blue	
End bracket	
dark beige	
Testing / Checking	
Standard	
With spigot	
Cover	
With lightning flash symbol	
Blank, white	
Marking tags	

Type	Qty.	Order No.
ZQV 2.5N/2	24 A 60	1527540000
ZQV 2.5N/10	24 A 20	1527690000
WQV 2.5/2	32 A 50	1053660000
WQV 2.5/10	32 A 20	1054460000
WAP 2.5-10	50	1050000000
WAP 2.5-10 BL	50	1050080000
WAP 16+35 WTW 2.5-10	20	1050100000
WAP 16+35 WTW 2.5-10 BL	20	1050180000
WEW 35/2	50	1061200000
WTA 2 WDU2.5-10	6 A 25	1632320000
WTA 2/ZA WDU2.5-10	6 A 25	1632330000
WAD 4 GE BED	50	1072000000
WAD 4 WS	50	1072100000
DEK 5/5 MC NE WS	1000	1609801044
WS 12/5 MC NE WS	720	1609860000
DEK 5/5 MM WS	800	2007110000
WS 8/5 MM WS	800	2007150000

Type	Qty.	Order No.
ZQV 2.5N/2	24 A 60	1527540000
ZQV 2.5N/10	24 A 20	1527690000
WQV 2.5/2	32 A 50	1053660000
WQV 2.5/10	32 A 20	1054460000
WAP 2.5-10	50	1050000000
WAP 2.5-10 BL	50	1050080000
WAP 16+35 WTW 2.5-10	20	1050100000
WAP 16+35 WTW 2.5-10 BL	20	1050180000
WEW 35/2	50	1061200000
WTA 2 WDU2.5-10	6 A 25	1632320000
WTA 2/ZA WDU2.5-10	6 A 25	1632330000
DEK 5/5 MC NE WS	1000	1609801044
WS 12/5 MC NE WS	720	1609860000
DEK 5/5 MM WS	800	2007110000
WS 8/5 MM WS	800	2007150000

For detailed information on other accessories and application in the online catalogue

Screw connection with clamping yoke technology (W-Series)

Feed-through terminal blocks

Universal range

A

AKZ 2.5

2.5 mm²

Feed-through terminal for TS 15



Width/Height/Depth	mm
max. current / max. cond. cross-section	A/mm ²
Max. clamping range	mm ²

5.1 x 25.5 x 26.3
32 / 4
0.13...4

Technical data

Rated data	
Rated voltage	V
Rated current	A
for wire cross-section	mm ²
Rated impulse withstand voltage / Pollution severity	
Gauge to IEC 60947-1 / UL 94 flammability rating	
Approvals	
Clamped conductors	
Solid / Stranded	mm ²
Flexible / Flexible with ferrule	mm ²
Tightening torque / Clamping screw	Nm
Stripping length / Blade size	mm/-
2 conductors with same cross-section (H05V/H07V)	
Solid / Stranded	-
Flexible / Flexible with ferrule	-
Note	

IEC 60947-7-1 Ex eb II C Gb II 2 G D

IEC	UL	CSA	EN 60079-7
250	300	300	220
24	10	10	24
2.5	AWG 26...12	AWG 26...10	4 mm ²
4 kV / 3			
A3 / V-0			
TUEV18ATEX8221U			
Rated connection		Further connection	
0.5...4 / 1.5...2.5			
0.5...2.5 / 0.5...2.5			
0.4...0.6 / (M 2.5)			
7 / 0.5 x 3.0 mm			
Note			

Ordering data

Version	
	dark beige
	beige
	Blue
Note	

Type	Qty.	Order No.
AKZ 2.5	100	0697160000
AKZ 2.5 BL	100	0697180000
Note		

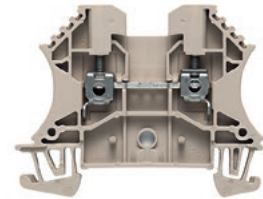
Accessories

Plug-in cross-connection	
	2-pole
	10-pole
Screwable cross-connection	
	2-pole
	10-pole
End plate / Partition plate	
	dark beige
	Blue
	dark beige
	Blue
End bracket	
	dark beige
Testing / Checking	
	Standard
	With spigot
	Test plug
	Socket
Cover	
	Blank, yellow
	Blank, white
	With lightning flash symbol
Marking tags	
	DEK 5/5 MC NE WS
For detailed information on other accessories and application in the online catalogue	

Type	Qty.	Order No.
Q 2 AKZ1.5	24 A 50	0368200000
Q 10 AKZ1.5	24 A 20	0368500000
AP AKZ2.5	50	0697360000
AP AKZ2.5 BL	50	0697380000
TW AKZ2.5	20	0318560000
EW 15	50	0382860000
PS 2.3 RT	20 mA 20	0180400000
STB 8.5/D4/2.3/M2.5 AKZ	50	0215700000
DEK 5/5 MC NE WS	1000	1609801044
For detailed information on other accessories and application in the online catalogue		

WDU 2.5

2.5 mm²



5.1 x 60 x 46.5
32 / 4
0.05...4

IEC 60947-7-1 Ex eb II C Gb II 2 G D

IEC	UL	CSA	EN 60079-7
800	600	600	690
24	25	20	24
2.5	AWG 30...12	AWG 26...12	2.5 mm ²
8 kV / 3			
A3 / V-0			
DEMKO14ATEX1338U			
Rated connection		Further connection	
0.5...4 / 0.5...4			
0.5...4 / 0.5...2.5			
0.4...0.8 / (M 2.5)			
10 / 0.6 x 3.5 mm			
Note			

Type	Qty.	Order No.
WDU 2.5	100	1020000000
WDU 2.5 BL	100	1020080000
Note		

Type	Qty.	Order No.
ZQV 2.5N/2	24 A 60	1527540000
ZQV 2.5N/10	24 A 20	1527690000
WQV 2.5/2	32 A 50	1053660000
WQV 2.5/10	32 A 20	1054460000
WAP 2.5-10	50	1050000000
WAP 2.5-10 BL	50	1050080000
WAP 16+35 WTW 2.5-10	20	1050100000
WAP 16+35 WTW 2.5-10 BL	20	1050180000
WEW 35/2	50	1061200000
WTA 2 WDU2.5-10	6 A 25	1632320000
WTA 2/ZA WDU2.5-10	6 A 25	1632330000
WAD 5 MC NE GE	48	1112920000
WAD 5 MC NE WS	48	1112910000
DEK 5/5 MC NE WS	1000	1609801044
WS 12/5 MC NE WS	720	1609860000
DEK 5/5 MM WS	800	2007110000
WS 8/5 MM WS	800	2007150000
For detailed information on other accessories and application in the online catalogue		

Screw connection with clamping yoke technology (W-Series)

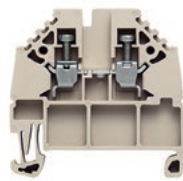
Feed-through terminal blocks

Universal range

A

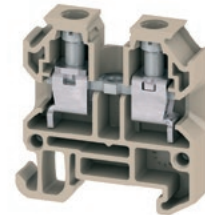
WDU 2.5N/600 UL

2.5 mm²



AKZ 4

4 mm²



Feed-through terminal for TS 15

Width/Height/Depth	mm
max. current / max. cond. cross-section	A/mm ²
Max. clamping range	mm ²

5.1 x 44 x 42.7
32 / 4
0.05...4

6.1 x 28.5 x 29
41 / 6
0.13...6

Technical data

Rated data	
Rated voltage	V
Rated current	A
for wire cross-section	mm ²
Rated impulse withstand voltage / Pollution severity	
Gauge to IEC 60947-1 / UL 94 flammability rating	
Approvals	
Clamped conductors	
Solid / Stranded	mm ²
Flexible / Flexible with ferrule	mm ²
Tightening torque / Clamping screw	Nm
Stripping length / Blade size	mm/-
2 conductors with same cross-section (H05V/H07V)	
Solid / Stranded	mm ²
Flexible / Flexible with ferrule	-
Note	

IEC 60947-7-1

IEC	UL	CSA	EN 60079-7
800	600	600	
24	25	20	
2.5	AWG 22...12	AWG 26...12	
8 kV / 3			
A3 / V-0			

CE UK CA IEC Ex II 2 G D

Rated connection	Further connection
0.5...4 / 1.5...4	
0.5...4 / 0.5...2.5	
0.4...0.6 / (M 2.5)	
10 / 0.6 x 3.5 mm	
0.5...1.5 / 0.5...1.5	
/ 0.5...1.5	

IEC 60947-7-1 Ex eb II C Gb II 2 G D

IEC	UL	CSA	EN 60079-7
400	300	300	352
32	27	10	32
4	AWG 26...12	AWG 24...12	6 mm ²
6 kV / 3			
A3 / V-0			

CE UK CA IEC Ex II 2 G D TUEV18ATEX8221U

Rated connection	Further connection
0.5...6 / 1.5...4	
0.5...4 / 0.5...2.5	
0.6...0.8 / (M 3)	
8 / 0.6 x 3.5 mm	
0.5...1.5 / 0.5...1.5	

Ordering data

Version	
dark beige	
beige	
Blue	
Note	

Type	Qty.	Order No.
WDU 2.5N/600UL	100	1730940000

Type	Qty.	Order No.
AKZ 4	100	0294360000
AKZ 4 BL	100	0294380000

Accessories

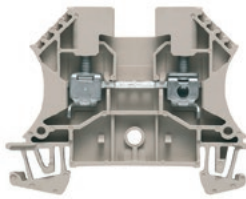
Plug-in cross-connection	
	2-pole
	10-pole
Screwable cross-connection	
	2-pole
	10-pole
End plate / Partition plate	
	dark beige
	Blue
	dark beige
	Blue
End bracket	
	dark beige
Testing / Checking	
	Standard
	With spigot
	Test plug
	Socket
Cover	
	Blank, white
	Blank, yellow
	With lightning flash symbol
Marking tags	
	DEK 5/5 MM WS
	DEK 5/5 MC NE WS
	WS 8/5 MM WS
	WS 12/5 MC NE WS
For detailed information on other accessories and application in the online catalogue	

Type	Qty.	Order No.
WQV 2.5/2	32 A 50	1053660000
WQV 2.5/10	32 A 20	1054460000
WAP WDU2.5N/4N	50	1060000000
WAP WDU2.5N/4N BL	50	1060080000
WEW 35/2	50	1061200000
WTA 1 WDU1.5	6 A 25	1632290000
WTA 1/ZA WDU1.5	6 A 25	1632300000
WAD 4 WS	50	1072100000
WAD 4 GE BED	50	1072000000
DEK 5/5 MM WS	800	2007110000
DEK 5/5 MC NE WS	1000	1609801044
WS 8/5 MM WS	800	2007150000
WS 12/5 MC NE WS	720	1609860000

Type	Qty.	Order No.
Q 2 AKZ4	24 A 50	0336400000
Q 10 AKZ4	24 A 20	0368600000
AP AKZ4	20	0294460000
AP AKZ4 BL	20	0294480000
TW AKZ4	50	0348260000
EW 15	50	0382860000
PS 2.3 RT	20 mA 20	0180400000
STB 8.5/D4/2.3/M2.5 AKZ	50	0215700000
DEK 5/6 MC NE WS	1000	1609820000

WDU 4

4 mm²



6.1 x 60 x 46.5
41 / 6
0.13...6



Ex eb II
C Gb II 2 G D

IEC 60947-7-1

IEC	UL	CSA	EN 60079-7
800	600	600	690
32	35	35	32
4	AWG 26...10	AWG 26...10	4 mm ²

8 kV / 3
A4 / V-0

DEMKO14ATEX1338U

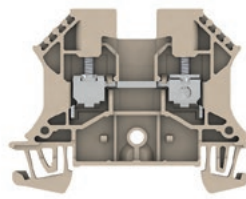
Rated connection	Further connection
0.5...6 / 1.5...6	
0.5...6 / 0.5...4	
0.5...1 / (M 3)	
10 / 0.6 x 3.5 mm	
0.5...2.5	
0.5...1.5 / 0.5...1.5	

Type	Qty.	Order No.
WDU 4	100	1020100000
WDU 4 BL	100	1020180000

Type	Qty.	Order No.
ZQV 4N/2	32 A 60	1527930000
ZQV 4N/10	32 A 20	1528090000
WQV 4/2	41 A 50	1051960000
WQV 4/10	41 A 20	1052060000
WAP 2.5-10	50	1050000000
WAP 2.5-10 BL	50	1050080000
WAP 16+35 WTW 2.5-10	20	1050100000
WAP 16+35 WTW 2.5-10 BL	20	1050180000
WEW 35/2	50	1061200000
WTA 3 WDU4	6 A 25	1632350000
WTA 3/ZA WDU4	6 A 25	1632360000
WAD 5 MC NE WS	48	1112910000
WAD 5 MC NE GE	48	1112920000
WS 12/6 MC NE WS	600	1609900000
DEK 5/6 MM WS	600	2007120000

WDU 4 HV

4 mm²



6.1 x 60 x 46.5
41 / 6
0.13...6



IEC 60947-7-1

IEC	UL	CSA	EN 60079-7
1000			
32			
4			

8 kV / 3
A4 / V-0

DEMKO14ATEX1338U

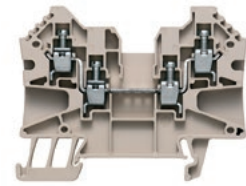
Rated connection	Further connection
0.5...6 / 1.5...6	
0.5...6 / 0.5...4	
0.5...1 / (M 3)	
10 / 0.6 x 3.5 mm	
0.5...2.5	
0.5...1.5 / 0.5...1.5	

Type	Qty.	Order No.
WDU 4 HV	100	1412960000

Type	Qty.	Order No.
ZQV 4N/2	32 A 60	1527930000
ZQV 4N/10	32 A 20	1528090000
WQV 4/2	41 A 50	1051960000
WQV 4/10	41 A 20	1052060000
WAP 2.5-10	50	1050000000
WAP 2.5-10 BL	50	1050080000
WAP 16+35 WTW 2.5-10	20	1050100000
WAP 16+35 WTW 2.5-10 BL	20	1050180000
WEW 35/2	50	1061200000
WTA 3 WDU4	6 A 25	1632350000
WTA 3/ZA WDU4	6 A 25	1632360000
WAD 5 MC NE WS	48	1112910000
WAD 5 MC NE GE	48	1112920000
WS 12/6 MC NE WS	600	1609900000
DEK 5/6 MC NE WS	1000	1609820000
DEK 5/6 MM WS	600	2007120000

WDU 4/ZZ

4 mm²



6.1 x 70 x 53
32 / 6
0.05...6



Ex eb II
C Gb II 2 G D

IEC 60947-7-1

IEC	UL	CSA	EN 60079-7
800	600	600	690
32	30	30	29.5
4	AWG 30...10	AWG 30...10	4 mm ²

8 kV / 3
A4 / V-0

DEMKO14ATEX1338U

Rated connection	Further connection
0.5...6 / 0.5...4	
0.5...4 / 0.5...4	
0.5...0.8 / (M 3)	
10 / 0.6 x 3.5 mm	
0.5...1.5 / 0.5...1.5	

Type	Qty.	Order No.
WDU 4/ZZ	50	1905060000
WDU 4/ZZ BL	50	1114720000

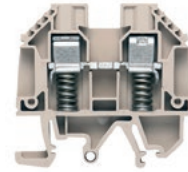
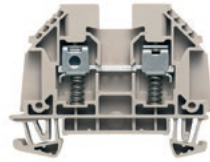
Type	Qty.	Order No.
ZQV 4N/2	32 A 60	1527930000
ZQV 4N/10	32 A 20	1528090000
WQV 4/2	41 A 50	1051960000
WQV 4/10	41 A 20	1052060000
WAP WDU/WTR4/ZZ	50	1905150000
WEW 35/2	50	1061200000
WS 12/6 MC NE WS	600	1609900000
DEK 5/6 MC NE WS	1000	1609820000
DEK 5/6 MM WS	600	2007120000

WDU 4 SL

4 mm²

WDU 4 SL/EN

4 mm²



Width/Height/Depth	mm
max. current / max. cond. cross-section	A/mm ²
Max. clamping range	mm ²

6.1 x 60 x 46.5
41 / 6
0.22...6

6.1 x 60 x 51.5
41 / 6
0.22...6

Technical data

Rated data	
Rated voltage	V
Rated current	A
for wire cross-section	mm ²
Rated impulse withstand voltage / Pollution severity	
Gauge to IEC 60947-1 / UL 94 flammability rating	
Approvals	
Clamped conductors	
Solid / Stranded	mm ²
Flexible / Flexible with ferrule	mm ²
Tightening torque / Clamping screw	Nm
Stripping length / Blade size	mm/-
2 conductors with same cross-section (H05V/H07V)	
Solid / Stranded	-
Flexible / Flexible with ferrule	mm ²
Note	

IEC 60947-7-1			
Ex eb II C Gb II 2 G D			
IEC	UL	CSA	EN 60079-7
690	600	300	440
32	30	25	32
4	AWG 22...10	AWG 22...10	4 mm ²
6 kV / 3			
A4 / V-0			
DEMKO14ATEX1338U			
Rated connection		Further connection	
0.5...6 / 1.5...6			
0.5...4 / 0.5...4			
0.5...1 / (M 3)			
15 / 0.6 x 3.5 mm			
0.5...1.5 / 0.5...1.5			

IEC 60947-7-1			
Ex eb II C Gb II 2 G D			
IEC	UL	CSA	EN 60079-7
690	600	300	690
32	30	25	32
4	AWG 22...10	AWG 22...10	4 mm ²
6 kV / 3			
A4 / V-0			
DEMKO14ATEX1338U			
Rated connection		Further connection	
0.5...6 / 1.5...6			
0.5...4 / 0.5...4			
0.5...1 / (M 3)			
15 / 0.6 x 3.5 mm			
0.5...1.5 / 0.5...1.5			

Ordering data

Version	
	dark beige
	dark beige
	Blue
Note	

Type	Qty.	Order No.
WDU 4 SL	50	9537440000
WDU 4 SL BL	50	9203060000

Type	Qty.	Order No.
WDU 4 SL/EN	50	9537450000

Accessories

Screwable cross-connection	
	2-pole
	10-pole
End plate / Partition plate	
	dark beige
	dark beige
	Blue
	Blue
End bracket	
	dark beige
Testing / Checking	
	Standard
Cover	
	Blank, yellow
	Blank, white
Hak. Cable lugs	
Marking tags	
Plug-in cross-connection	
	2-pole
	10-pole
For detailed information on other accessories and application in the online catalogue	

Type	Qty.	Order No.
WQV 4/2	41 A 50	1051960000
WQV 4/10	41 A 20	1052060000
WAP 2.5-10	50	1050000000
WAP 16*35 WTW 2.5-10	20	1050100000
WEW 35/2	50	1061200000
WTA 3 WDU4	6 A 25	1632350000
HBT 1.5 - 3,0 RT	100	1312440000
HBT 2,5 - 3,0 BL	100	1312450000
WS 12/6 MC NE WS	600	1609900000
ZQV 4N/2	32 A 60	1527930000
ZQV 4N/10	32 A 20	1528090000

Type	Qty.	Order No.
WQV 4/2	41 A 50	1051960000
WQV 4/10	41 A 20	1052060000
WAP 2.5-10	50	1050000000
WAP 16*35 WTW 2.5-10	20	1050100000
WEW 35/2	50	1061200000
WTA 3 WDU4	6 A 25	1632350000
HBT 1.5 - 3,0 RT	100	1312440000
HBT 2,5 - 3,0 BL	100	1312450000
WS 12/6 MC NE WS	600	1609900000
ZQV 4N/2	32 A 60	1527930000
ZQV 4N/10	32 A 20	1528090000



Screw connection with clamping yoke technology (W-Series)

Feed-through terminal blocks

Universal range

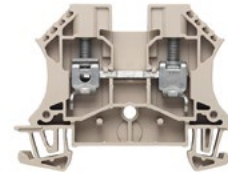
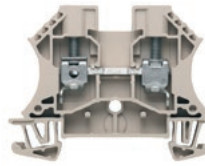
A

WDU 6

6 mm²

WDU 6 HV

6 mm²



Width/Height/Depth	mm
max. current / max. cond. cross-section	A/mm ²
Max. clamping range	mm ²

7.9 x 60 x 46.5	
57 / 10	
0.22...10	

7.9 x 60 x 46.5	
57 / 10	
0.22...10	

Technical data

Rated data	
Rated voltage	V
Rated current	A
for wire cross-section	mm ²
Rated impulse withstand voltage / Pollution severity	
Gauge to IEC 60947-1 / UL 94 flammability rating	
Approvals	
Clamped conductors	
Solid / Stranded	mm ²
Flexible / Flexible with ferrule	mm ²
Tightening torque / Clamping screw	Nm
Stripping length / Blade size	mm/-
2 conductors with same cross-section (H05V/H07V)	
Solid / Stranded	mm ²
Flexible / Flexible with ferrule	mm ²
Note	

IEC 60947-7-1

IEC	UL	CSA	EN 60079-7
800	600	600	690
41	50	50	41
6	AWG 22...8	AWG 22...8	10 mm ²
8 kV / 3			
A5 / V-0			
DEMKO14ATEX1338U			
Rated connection		Further connection	
0.5...10 / 1.5...10			
0.5...10 / 0.5...6			
0.8...1.6 / (M 3.5)			
12 / 0.8 x 4.0 mm			
0.5...2.5			
0.5...2.5 / 0.5...2.5			

IEC 60947-7-1

IEC	UL	CSA	EN 60079-7
1000			
41			
6			
8 kV / 3			
A5 / V-0			
Rated connection		Further connection	
0.5...10 / 1.5...10			
0.5...10 / 0.5...6			
0.8...1.6 / (M 3.5)			
12 / 0.8 x 4.0 mm			
0.5...2.5			
0.5...2.5 / 0.5...2.5			

Ordering data

Version	
	dark beige
	dark beige
	Blue
Note	

Type	Qty.	Order No.
WDU 6	100	1020200000
WDU 6 BL	100	1020280000

Type	Qty.	Order No.
WDU 6 HV	100	1412970000
WDU 6 IR	100	1393350000

Accessories

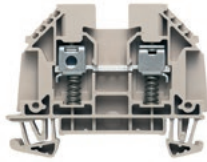
Screwable cross-connection	
	2-pole
	10-pole
End plate / Partition plate	
	dark beige
	dark beige
	Blue
	Blue
End bracket	
	dark beige
Testing / Checking	
	Standard
Cover	
	Blank, yellow
	Blank, white
Hak. Cable lugs	
Marking tags	
Plug-in cross-connection	
	2-pole
	10-pole
For detailed information on other accessories and application in the online catalogue	

Type	Qty.	Order No.
WQV 6/2	57 A 50	1052360000
WQV 6/10	57 A 20	1052260000
WAP 2.5-10	50	1050000000
WAP 16+35 WTW 2.5-10	20	1050100000
WAP 2.5-10 BL	50	1050080000
WAP 16+35 WTW 2.5-10 BL	20	1050180000
WEW 35/2	50	1061200000
WTA 3 WDU4	6 A 25	1632350000
WAD 8 MC NE GE	48	1112950000
WAD 8 MC NE WS	48	1112940000
DEK 5/8 MC NE WS	800	1856740000
WS 12/6.5 MC NE WS	540	1609920000
WS 8/8 MM WS	500	2007170000
DEK 5/8 MM WS	500	2007130000

Type	Qty.	Order No.
WQV 6/2	57 A 50	1052360000
WQV 6/10	57 A 20	1052260000
WAP 2.5-10	50	1050000000
WAP 16+35 WTW 2.5-10	20	1050100000
WAP 2.5-10 BL	50	1050080000
WAP 16+35 WTW 2.5-10 BL	20	1050180000
WEW 35/2	50	1061200000
WTA 3 WDU4	6 A 25	1632350000
WAD 8 MC NE GE	48	1112950000
WAD 8 MC NE WS	48	1112940000
DEK 5/8 MC NE WS	800	1856740000
WS 12/8 PLUS MC NE WS	420	1906000000
WS 8/8 MM WS	500	2007170000
DEK 5/8 MM WS	500	2007130000

WDU 6 SL

6 mm²



7.9 x 60 x 46.5
57 / 6
0.5...6



IEC 60947-7-1 Ex eb II C Gb II 2 G D

IEC	UL	CSA	EN 60079-7
630	150	300	275
41	50	45	40
6	AWG 20...8	AWG 20...8	6 mm ²

6 kV / 2
A5 / V-0

DEMKO14ATEX1338U

Rated connection	Further connection
0.5...6 / 0.5...6	
0.5...6 / 0.5...6	
0.8...1.6 / (M 3.5)	
16 / 0.8 x 4.0 mm	

WDU 6 SL/EN

6 mm²



7.9 x 60 x 51.1
57 / 6
0.5...6



IEC 60947-7-1 Ex eb II C Gb II 2 G D

IEC	UL	CSA	EN 60079-7
690	150	300	440
41	50	45	40
6	AWG 20...8	AWG 20...8	6 mm ²

6 kV / 3
A5 / V-0

DEMKO14ATEX1338U

Rated connection	Further connection
0.5...6 / 0.5...6	
0.5...6 / 0.5...6	
0.8...1.6 / (M 3.5)	
16 / 0.8 x 4.0 mm	

Type	Qty.	Order No.
WDU 6 SL	50	9537460000

Type	Qty.	Order No.
WDU 6 SL/EN	50	9537470000

Type	Qty.	Order No.
WQV 6/2	57 A 50	1052360000
WQV 6/10	57 A 20	1052260000
WAP 2.5-10	50	1050000000
WAP 16*35 WTW 2.5-10	20	1050100000
WEW 35/2	50	1061200000
WTA 5/1	6 A 25	1051260000
WAD 8 MC NE GE	48	1112950000
WAD 8 MC NE WS	48	1112940000
HBT 1,5 - 4,6 RT	100	1233340000
HBT 2,5 - 4,6 BL	100	1233330000
HBT 6,0 - 4,6 GE	100	1216230000
DEK 5/8 MC NE WS	800	1856740000
WS 12/6.5 MC NE WS	540	1609920000
WS 8/8 MM WS	500	2007170000
DEK 5/8 MM WS	500	2007130000

Type	Qty.	Order No.
WQV 6/2	57 A 50	1052360000
WQV 6/10	57 A 20	1052260000
WAP 2.5-10	50	1050000000
WAP 16*35 WTW 2.5-10	20	1050100000
WEW 35/2	50	1061200000
WTA 5/1	6 A 25	1051260000
WAD 8 MC NE GE	48	1112950000
WAD 8 MC NE WS	48	1112940000
HBT 1,5 - 4,6 RT	100	1233340000
HBT 2,5 - 4,6 BL	100	1233330000
HBT 6,0 - 4,6 GE	100	1216230000
DEK 5/8 MC NE WS	800	1856740000
WS 12/6.5 MC NE WS	540	1609920000
WS 8/8 MM WS	500	2007170000
DEK 5/8 MM WS	500	2007130000



Screw connection with clamping yoke technology (W-Series)

Feed-through terminal blocks

Universal range

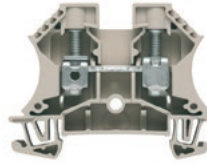
A

WDU 10

10 mm²

WDU 10 IR

10 mm²



Width/Height/Depth	mm
max. current / max. cond. cross-section	A/mm ²
Max. clamping range	mm ²

9.9 x 60 x 46.5
76 / 16
1.31...16

9.9 x 60 x 46.5
76 / 16
1.31...16

Technical data

Rated data	
Rated voltage	V
Rated current	A
for wire cross-section	mm ²
Rated impulse withstand voltage / Pollution severity	
Gauge to IEC 60947-1 / UL 94 flammability rating	
Approvals	
Clamped conductors	
Solid / Stranded	mm ²
Flexible / Flexible with ferrule	mm ²
Tightening torque / Clamping screw	Nm
Stripping length / Blade size	mm/-
2 conductors with same cross-section (H05V/H07V)	
Solid / Stranded	mm ²
Flexible / Flexible with ferrule	mm ²
Note	

IEC 60947-1 Ex eb II C Gb II 2 G D

IEC	UL	CSA	EN 60079-7
1000	600	600	690
57	65	65	57
10	AWG 18...6	AWG 18...6	10 mm ²
8 kV / 3			
B6 / V-0			
DEMKO14ATEX1338U			
Rated connection		Further connection	
1.5...16 / 1.5...16			
1.5...16 / 1.5...16			
1.2...1.9 / (M 4)			
12 / 1.0 x 5.5 mm			
0.5...6 / 0.5...6			
0.5...6 / 0.5...6			

IEC 60947-1 Ex eb II C Gb II 2 G D

IEC	UL	CSA	EN 60079-7
1000	600	600	690
57	65	65	57
10	AWG 18...6	AWG 18...6	10 mm ²
8 kV / 3			
B6 / V-0			
DEMKO14ATEX1338U			
Rated connection		Further connection	
1.5...16 / 1.5...16			
1.5...16 / 1.5...16			
1.5...1.8 / (M 4)			
12 / TX 15			

Ordering data

Version	
	dark beige
	Blue
	dark beige (combi clip-on foot TS 32/25)
	black (combi clip-on foot TS 32/25)
Note	

Type	Qty.	Order No.
WDU 10	50	1020300000
WDU 10 BL	50	1020380000

Type	Qty.	Order No.
WDU 10 IR	50	1393380000

Accessories

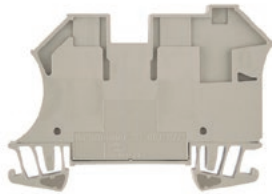
Screwable cross-connection	
	2-pole
	10-pole
End plate / Partition plate	
	dark beige
	Blue
	dark beige
	Blue
End bracket	
	dark beige
Testing / Checking	
	Standard
Cover	
	Blank, yellow
	Blank, white
Hak. Cable lugs	
Marking tags	
For detailed information on other accessories and application in the online catalogue	

Type	Qty.	Order No.	
WQV 10/2	76 A	50	1052560000
WQV 10/10	63 A	20	1052460000
WAP 2.5-10		50	1050000000
WAP 2.5-10 BL		50	1050080000
WAP 16+35 WTW 2.5-10		20	1050100000
WAP 16+35 WTW 2.5-10 BL		20	1050180000
WEW 35/2		50	1061200000
WTA 3 WDU4	6 A	25	1632350000
WAD 8 MC NE GE		48	1112950000
WAD 8 MC NE WS		48	1112940000
DEK 5/5 MC NE WS	1000		1609801044
WS 12/6.5 MC NE WS	540		1609920000

Type	Qty.	Order No.	
WQV 10/2	76 A	50	1052560000
WQV 10/10	63 A	20	1052460000
WAP 2.5-10		50	1050000000
WAP 2.5-10 BL		50	1050080000
WAP 16+35 WTW 2.5-10		20	1050100000
WAP 16+35 WTW 2.5-10 BL		20	1050180000
WEW 35/2		50	1061200000
WTA 5/1	6 A	25	1051260000
WAD 8 MC NE GE		48	1112950000
WAD 8 MC NE WS		48	1112940000
DEK 5/5 MC NE WS	1000		1609801044
WS 12/6.5 MC NE WS	540		1609920000

WDU 10/ZR

10 mm²



9.9 x 70 x 49
76 / 16
1.31...16



IEC 60947-7-1

IEC	UL	CSA	EN 60079-7
800	600	600	
57	65	65	
10	AWG 16...6	AWG 16...6	
8 kV / 3 B6, A4 / V-0			



Rated connection	Further connection
1.5...16 / 1.5...16	0.5...6 / 1.5...4
1.5...16 / 1.5...16	0.5...4 / 0.5...4
1.2...1.9 / (M 4)	
12 / 0.6 x 3.5 mm	10 / 0.6 x 3.5 mm

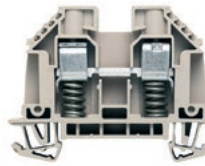
0.5...6
1...6 / 1...6

Type	Qty.	Order No.
WDU 10/ZR	50	1042400000
WDU 10/ZR BL	50	1042480000

Type	Qty.	Order No.
WQV 10/2	76 A 50	1052560000
WQV 10/10	63 A 20	1052460000
WEW 35/2	50	1061200000
WTA 5/1	6 A 25	1051260000
WAD 8 MC NE GE	48	1112950000
WAD 8 MC NE WS	48	1112940000
HBT 1,5 - 4,6 RT	100	1233340000
HBT 2,5 - 4,6 BL	100	1233330000
HBT 6,0 - 4,6 GE	100	1216230000
DEK 5/5 MC NE WS	1000	1609801044
WS 12/6.5 MC NE WS	540	1609920000

WDU 10 SL

10 mm²



9.9 x 60 x 46.25
76 / 10
1.31...10



IEC 60947-7-1

IEC	UL	CSA	EN 60079-7
630	150	300	352
57	50	65	55
10	AWG 16...8	AWG 16...6	10 mm ²
6 kV / 2 A5 / V-0			



Rated connection	Further connection
1.5...10 / 1.5...10	
1...6 / 1.5...10	
1.2...2.4 / (M 4)	
17 / 1.0 x 5.5 mm	

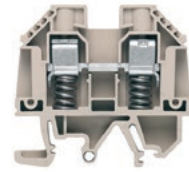
2.5...4 / 1...4

Type	Qty.	Order No.
WDU 10 SL	50	9537480000

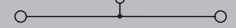
Type	Qty.	Order No.
WQV 10/2	76 A 50	1052560000
WQV 10/10	63 A 20	1052460000
WAP 2.5-10	50	1050000000
WAP 2.5-10 BL	50	1050080000
WAP 16*35 WTW 2.5-10	20	1050100000
WEW 35/2	50	1061200000
WTA 5/1	6 A 25	1051260000
WAD 8 MC NE GE	48	1112950000
WAD 8 MC NE WS	48	1112940000
HBT 1,5 - 4,6 RT	100	1233340000
HBT 2,5 - 4,6 BL	100	1233330000
HBT 6,0 - 4,6 GE	100	1216230000
DEK 5/5 MC NE WS	1000	1609801044
WS 12/6.5 MC NE WS	540	1609920000

WDU 10 SL/EN

10 mm²



9.9 x 56.6 x 51.1
76 / 16
1.31...16



IEC 60947-7-1

IEC	UL	CSA	EN 60079-7
690	600	300	550
57	50	65	55
10	AWG 16...8	AWG 16...6	10 mm ²
6 kV / 3 A6 / V-0			



Rated connection	Further connection
1.5...16 / 1.5...16	
1...6 / 1.5...10	
1.2...2.4 / (M 4)	
17 / 1.0 x 5.5 mm	

2.5...4 / 1...4

Type	Qty.	Order No.
WDU 10 SL/EN	50	9537490000
WDU 10 SL/EN SW	50	9537410000

Type	Qty.	Order No.
WQV 10/2	76 A 50	1052560000
WQV 10/10	63 A 20	1052460000
WAP 2.5-10	50	1050000000
WAP 2.5-10 BL	50	1050080000
WAP 16*35 WTW 2.5-10	20	1050100000
WEW 35/2	50	1061200000
WTA 5/1	6 A 25	1051260000
WAD 8 MC NE GE	48	1112950000
WAD 8 MC NE WS	48	1112940000
HBT 1,5 - 4,6 RT	100	1233340000
HBT 2,5 - 4,6 BL	100	1233330000
HBT 6,0 - 4,6 GE	100	1216230000
DEK 5/5 MC NE WS	1000	1609801044
WS 12/6.5 MC NE WS	540	1609920000



Screw connection with clamping yoke technology (W-Series)

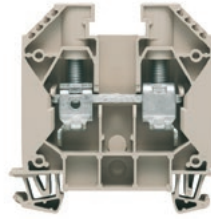
Feed-through terminal blocks

Identically contoured design of 2.5 to 10 mm² with identical end plates and partitions. An unmatched combination of many advantages!

The compact terminals are impressive for their small size and rated cross-section capacity.

WDU 16

16 mm²



Width/Height/Depth	mm
max. current / max. cond. cross-section	A/mm ²
Max. clamping range	mm ²

11.9 x 60 x 62.5
101 / 25
0.82...25

Technical data

Rated data	
Rated voltage	V
Rated current	A
for wire cross-section	mm ²
Rated impulse withstand voltage / Pollution severity	
Gauge to IEC 60947-1 / UL 94 flammability rating	
Approvals	
Clamped conductors	
Solid / Stranded	mm ²
Flexible / Flexible with ferrule	mm ²
Tightening torque / Clamping screw	Nm
Stripping length / Blade size	mm/-
2 conductors with same cross-section (H05V/H07V)	
Solid / Stranded	mm ²
Flexible / Flexible with ferrule	mm ²
Note	

Ordering data

Version	
	dark beige
	without peg / dark beige
	with peg / blue
	with peg / dark beige
Note	

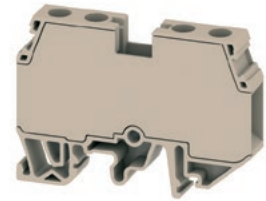
Accessories

Screwable cross-connection	
	2-pole
	10-pole
End plate / Partition plate	
	dark beige
	Blue
End bracket	
	dark beige, screwable
	dark beige
Cover	
	black/yellow
	white
	Blank, yellow
	Blank, white
Marking tags	

For detailed information on other accessories and application in the online catalogue

WDUB 16

16 mm²



9.9 x 65 x 47
76 / 16
0.5...16

IEC 60947-7-1

IEC	UL	CSA	EN 60079-7
1000	600	600	
76	65	65	
16	AWG 18...6		16 mm ²
8 kV / 3			
B6 / V-0			
Rated connection		Further connection	
0.5...16 / 0.5...16			
0.5...10 / 0.5...10			
1.2...1.9 / (M 4)			
20 / 0.8 x 4.0 mm			
Note			

Type	Qty.	Order No.
WDUB 16	20	2868370000
Note		

Type	Qty.	Order No.
WQV 10/2	76 A 50	1052560000
WQV 10/10	63 A 20	1052460000
WEW 35/2	50	1061200000
WAD 8 MC B GE/SW	48	1120470000
WAD 8 MC NE WS	48	1112940000
DEK 5/5 MC NE WS	1000	1609801044
WS 12/5 MC NE WS	720	1609860000

For detailed information on other accessories and application in the online catalogue

Screw connection with clamping yoke technology (W-Series)

Feed-through terminal blocks

Identically contoured design of 2.5 to 10 mm² with identical end plates and partitions. An unmatched combination of many advantages!
The compact terminals are impressive for their small size and rated cross-section capacity.

Universal range

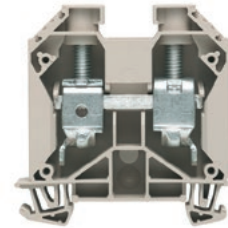
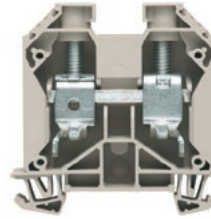
A

WDU 35

35 mm²

WDU 35 IR

35 mm²



Width/Height/Depth	mm
max. current / max. cond. cross-section	A/mm ²
Max. clamping range	mm ²

16 x 60 x 62.5
150 / 50
2.5...50

16 x 60 x 62.5
150 / 50
2.5...50

Technical data

Rated data	
Rated voltage	V
Rated current	A
for wire cross-section	mm ²
Rated impulse withstand voltage / Pollution severity	
Gauge to IEC 60947-1 / UL 94 flammability rating	
Approvals	
Clamped conductors	
Solid / Stranded	mm ²
Flexible / Flexible with ferrule	mm ²
Tightening torque / Clamping screw	Nm
Stripping length / Blade size	mm/-
2 conductors with same cross-section (H05V/H07V)	
Solid / Stranded	-
Flexible / Flexible with ferrule	mm ²
Note	

IEC 60947-7-1				Ex eb II	C Gb	II 2 G D
B9 / V-0						
				DEMKO14ATEX1338U		
Rated connection		Further connection				
2.5...16 / 2.5...50						
2.5...35 / 2.5...35						
4...5 / (M 6)						
18 / 6.5 x 1.2 mm						
/ 16...16						
2.5...16 / 2.5...16						
Note						

IEC 60947-7-1				Ex eb II	C Gb	II 2 G D
B8, B9 / V-0						
				DEMKO14ATEX1338U		
Rated connection		Further connection				
2.5...16 / 2.5...50						
2.5...35 / 2.5...35						
4...5 / (M 6)						
18 / TX 20						
Note						

Ordering data

Version	
	without peg / dark beige
	with peg / blue
	with peg / dark beige
Note	

Type	Qty.	Order No.
WDU 35	40	1020500000
WDU 35 BL	40	1020580000
WDU 35/ZA	40	1028800000
Note		

Type	Qty.	Order No.
WDU 35 IR	40	1393400000
Note		

Accessories

Screwable cross-connection	
	2-pole
	10-pole
	4-pole
End plate / Partition plate	
	dark beige
	Blue
End bracket	
	dark beige, screwable
	dark beige
Cover	
	black/yellow
	white
	With lightning flash symbol
Marking tags	

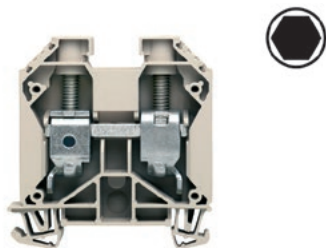
Type	Qty.	Order No.
WQV 35/2	138 A 50	1053060000
WQV 35/10	112 A 10	1053160000
WAP 16+35 WTW 2.5-10	20	1050100000
WAP 16+35 WTW 2.5-10 BL	20	1050180000
WEW 35/1	50	1059000000
WAD 12 MC B GE/SW	32	2445090000
WAD 12 MC NE WS	32	2445070000
DEK 5/5 MC NE WS	1000	1609801044
WS 12/6.5 MC NE WS	540	1609920000
Note		

Type	Qty.	Order No.
WQV 35/2	138 A 50	1053060000
WQV 35/10	112 A 10	1053160000
WAP 16+35 WTW 2.5-10	20	1050100000
WAP 16+35 WTW 2.5-10 BL	20	1050180000
WEW 35/1	50	1059000000
WAD 12 MC B GE/SW	32	2445090000
WAD 12 MC NE WS	32	2445070000
DEK 5/5 MC NE WS	1000	1609801044
WS 12/5 MC NE WS	720	1609860000
Note		

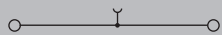
For detailed information on other accessories and application in the online catalogue

WDU 35 IK

35 mm²



16 x 60 x 62.5
150 / 50
2.5...50



IEC 60947-7-1 Ex eb II C Gb II 2 G D

IEC	UL	CSA	EN 60079-7
1000	600	600	690
125	150	150	115
35	AWG 12...NaN	AWG 12...NaN	35 mm ²

8 kV / 3
B8, B9 / V-0

DEMKO14ATEX1338U

Rated connection	Further connection
2.5...16 / 2.5...50	
2.5...35 / 2.5...35	
4...6 / (M 6)	
18 / S4 (DIN 6911)	
/ 16...16	
2.5...16 / 2.5...16	

Type	Qty.	Order No.
WDU 35/IK	25	1020600000
WDU 35/IK BL	25	1020680000
WDU 35/IK/ZA	25	1029000000

Type	Qty.	Order No.
WQV 35/2	138 A 50	1053060000
WQV 35/10	112 A 10	1053160000
WAP 16+35 WTW 2.5-10	20	1050100000
WAP 16+35 WTW 2.5-10 BL	20	1050180000
WEW 35/1	50	1059000000
WAD 12 MC B GE/SW	32	2445090000
WAD 12 MC NE WS	32	2445070000
DEK 5/5 MC NE WS	1000	1609801044
WS 12/6.5 MC NE WS	540	1609920000

WDU 35N

35 mm²



16 x 66 x 50.5
150 / 50
2.5...50



IEC 60947-7-1 Ex eb II C Gb II 2 G D

IEC	UL	CSA	EN 60079-7
500	1000	300	352
125	150	120	110
35	AWG 12...0	AWG 12...2	35 mm ²

6 kV / 3
B8, B9 / V-0

DEMKO14ATEX1338U

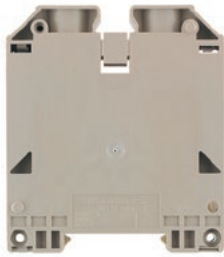
Rated connection	Further connection
2.5...16 / 2.5...50	
2.5...35 / 2.5...35	
4...5 / (M 6)	
18 / 6.5 x 1.2 mm	
2.5...6 / 2.5...6	

Type	Qty.	Order No.
WDU 35N	20	1040400000
WDU 35N BL	20	1040480000

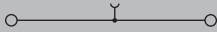
Type	Qty.	Order No.
WQV 35N/2	125 A 20	1079200000
WQV 35N/4	125 A 20	1079400000
WTW EN	20	1058800000
WEW 35/2	50	1061200000
WAD 16N GE BED	50	1083600000
DEK 5/5 MC NE WS	1000	1609801044
WS 12/6.5 MC NE WS	540	1609920000

WDU 70N

70 mm²



20.5 x 75 x 85
232 / 95
16...95



Ex eb II
C Gb II 2 G D

IEC 60947-7-1

IEC	UL	CSA	EN 60079-7
1000	600	600	690
192	150	150	184
70	AWG 6...0	AWG 6...0	70 mm ²

8 kV / 3
B11 / V-0

DEMKO14ATEX1338U

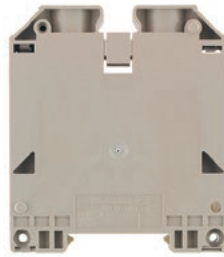
Rated connection	Further connection
16...16 / 16...95	
16...70 / 16...50	
8...12 / (M 8)	
22 / S6 (DIN 6911)	
/ 10...25	
10...25 / 6...25	

Type	Qty.	Order No.
WDU 70N/35	10	9512190000
WDU 70N/35 BL	10	9512420000

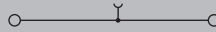
Type	Qty.	Order No.
WQV 70N/2	192 A	5 9512240000
WQV 70N/3	192 A	5 9512250000
WQV 70N/4	192 A	5 9531290000
WEW 35/1	50	1059000000
WAD 20 GE WSD	10	9512260000
WZAD 70N	41 A	5 1964830000
DEK 5/5 MC NE WS	1000	1609801044
WS 12/6.5 MC NE WS	540	1609920000
SKS 2,0-8,0 MR	1	9008870000

WDU 70N/35 IR

70 mm²



20.5 x 75 x 85
232 / 95
16...95



IEC 60947-7-1

IEC	UL	CSA	EN 60079-7
1000	600		
192	150		
70	AWG 6...0		

8 kV / 3
B11 / V-0

DEMKO14ATEX1338U

Rated connection	Further connection
16...16 / 16...95	
16...70 / 16...50	
8...12 / (M 8)	
22 / TX 40	

Type	Qty.	Order No.
WDU 70N/35 IR	10	1393420000

Type	Qty.	Order No.
WQV 70N/2	192 A	5 9512240000
WQV 70N/3	192 A	5 9512250000
WQV 70N/4	192 A	5 9531290000
WEW 35/1	50	1059000000
WAD 20 GE WSD	10	9512260000
WZAD 70N	41 A	5 1964830000
DEK 5/5 MC NE WS	1000	1609801044
WS 12/5 MC NE WS	720	1609860000
THS 9-40	1	9008880000

WDU 95N/120N

120 mm²



27 x 91 x 90
290 / 150
16...150



Ex eb II
C Gb II 2 G D

IEC 60947-7-1

IEC	UL	CSA	EN 60079-7
1000	1000	1000	880
269	228	220	221
120	AWG 4...250	AWG 4...0	120 mm ²

8 kV / 3
B13 / V-0

DEMKO14ATEX1338U

Rated connection	Further connection
16...16 / 16...150	
16...120 / 16...95	
12...20 / (M 10)	
27 / S6 (DIN 6911)	
/ 35...10 / 10...35	
16...35 / 10...35	

Type	Qty.	Order No.
WDU 95N/120N	5	1820550000
WDU 95N/120N BL	5	1820560000

Type	Qty.	Order No.
WQV 95N/120N/2	269 A	5 1826890000
WQV 95N/120N/3	269 A	5 1826900000
WQV 95N/120N/4	269 A	5 1826910000
WEW 35/1	50	1059000000
WAD 20 GE WSD	10	9512260000
WZAD 95N/120N	41 A	5 1859580000
DEK 5/5 MC NE WS	1000	1609801044
WS 12/6.5 MC NE WS	540	1609920000
SKS 2,0-8,0 MR	1	9008870000



Screw connection with clamping yoke technology (W-Series)

Feed-through terminal blocks

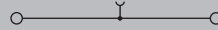
WDU 240

240 mm²



Width/Height/Depth	mm
max. current / max. cond. cross-section	A/mm ²
Max. clamping range	mm ²

36 x 100 x 123.7
415 / 240
70...240



Technical data

Rated data	
Rated voltage	V
Rated current	A
for wire cross-section	mm ²
Rated impulse withstand voltage / Pollution severity	
Gauge to IEC 60947-1 / UL 94 flammability rating	

IEC 60947-7-1 Ex e II II 2 G D

IEC	UL	CSA	EN 60079-7
1000	600	600	1100
415	380	400	350
240		AWG 0...500	240 mm ²
8 kV / 3			
B15 / V-0			

Clamped conductors	
Solid / Stranded	mm ²
Flexible / Flexible with ferrule	mm ²
Tightening torque / Clamping screw	Nm
Stripping length / Blade size	mm/-

CE KEMA01ATEX2186U

Rated connection	Further connection
70...185 / 70...240	
70...240 / 70...185	
25...30 / (M 10)	
40 / S8 (DIN 6911)	

2 conductors with same cross-section (H05V/H07V)	
Solid / Stranded	-
Flexible / Flexible with ferrule	mm ²

/ 35...95	
50...95 / 35...50	

Note

Ordering data

Version	
	dark beige
	Blue

Type	Qty.	Order No.
WDU 240	2	1802780000
WDU 240 BL	2	1822210000

Note

Accessories

Screwable cross-connection	
	2-pole
	3-pole
	4-pole

Type	Qty.	Order No.
WQB 240/2	320 A 5	1802790000
WQB 240/3	320 A 5	1802800000

End bracket	
	dark beige, screwable

WEW 35/1	50	1059000000
----------	----	------------

Cover	
	With lightning flash symbol

Additional connection	
	10 mm ²

WZAD 240	57 A 5	1802810000
----------	--------	------------

Marking tags	
	10 mm ²

DEK 5/5 MC NE WS	1000	1609801044
WS 12/6.5 MC NE WS	540	1609920000

Screwdriver	
	Standard

SKS 2,0-8,0 MR	1	9008870000
----------------	---	------------

Note

For detailed information on other accessories and application in the online catalogue