

7 Series Ex db LED Luminaire

Zones: **1** **2** **21** **22** Cat: **2**



High efficiency Zone 1 and Zone 21 LED Luminaire in both standard and self test emergency formats for use in hazardous areas. A range of sizes from 1-5ft with light output up to 6,675 Lumens.

Low maintenance, high output LED light source and energy efficient control with motion sensor options for controlling single and multiple fittings. Manufactured from impact resistant polycarbonate and high specification marine grade aluminium, the fitting is supplied anodised and painted.

- ✓ Low maintenance high efficiency LED light source
- ✓ Energy efficient control
- ✓ 1', 2', 4' and 5' versions
- ✓ Robust long life Zone 1 enclosure
- ✓ Motion sensor option
- ✓ Standard and self-test, 3-hour emergency versions



Specifications & Options

Label Marking	II 2 G Ex db II* T6 Gb II 2 D Ex tb IIIC T85°C Db (II* - IIC Sizes 1,2,4 IIB Size 5)	Certification standards	EN/IEC 60079 - 0, -1, -31
Zoned areas	Zones 1, 2, 21 & 22	Certificate No.s	CML 14ATEX1028X CML 21UKEX11018X IECEx CML140012X
Ambient range (max)	-20°C to +55°C	IP rating	IP66
Material	Marine grade aluminium body with high impact polycarbonate tube		
Cable entries	4 x M20 iso (3 plugged) as standard, other threads available		
Electrical connections	3 wire and earth cable size 4mm ² max. Through wiring as standard		
Light output	High efficiency LED with various outputs ranging from 1,335lm to 6,675lm		
Supply voltage (s)	230V 50/60Hz. Call for details of versions available		
Installation / Mounting	2 x M8 tapped holes. Size 1 335mm, size 2 632mm, size 4 1,242mm, size 5 1,542mm		
Control gear	Electronic Driver		
Self-testing emergency	3-hour self-test emergency with auto-commissioning. Runs monthly and yearly checks automatically		
Dimensions	Size 1 448mm x 158mm, size 2 752mm x 158mm, size 4 1,362mm x 158mm, size 5 1,662mm x 158mm		
Weight	Size 1' 3kg, size 2' 5kg, size 4' 7kg, size 5' 8kg		



7 Series Ex db LED Luminaire

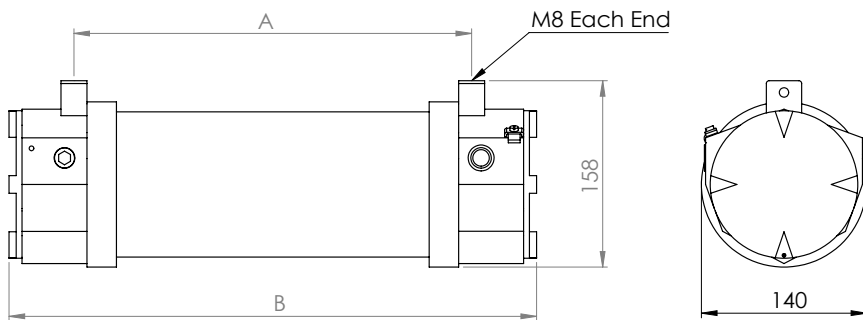


Spares and accessories available
Refer to main catalogue

CIRCUIT BREAKER / INRUSH CURRENT

Model	typ.Ipeak	No. of Luminaires per single pole Circuit Breaker				
		Type	10A	16A	20A	25A
7LED2700/R2	16.2A/184 μ	B	17	27	34	43
		C	28	45	57	71
7LED4700/R2	32.4A/184 μ	B	8	13	17	21
		C	14	22	28	35
7LED5700/R2	32.4A/184 μ	B	8	13	17	21
		C	14	22	28	35

Supply voltage @230 VAC, mains impedance = 1Ω
In case of multi-pole CB the maximum number is reduced by 20%.
The maximum number may differ depending on CB manufacturer. Please consult the manufacturer specifications.
Circuit Breakers with C characteristics are recommended for LED lighting circuits.



Size	A / mm	B / mm
1	335	448
2	632	752
4	1242	1362
5	1542	1662

ORDERING INFORMATION

Standard	Part Number	Description	Light Source	Light Output	Power Consumption	Size
	7LED1700/R2	15W Ex d Zone 1 EM Luminaire	LED	1,335lm	15W	448mm
	7LED2700/R2	30W Ex d Zone 1 EM Luminaire	LED	2,670lm	30W	752mm
	7LED4700/R2	55W Ex d Zone 1 EM Luminaire	LED	5,340lm	55W	1,362mm
	7LED5700/R2	70W Ex d Zone 1 EM Luminaire	LED	6,675lm	70W	1,662mm

Emergency	Part Number	Description	Light Source	Light Output	Power Consumption	Size
	7LED1700/EM/R2	15W Ex d Zone 1 EM Luminaire	LED	1,335lm	15W	448mm
	7LED2700/EM/R2	30W Ex d Zone 1 EM Luminaire	LED	2,670lm	30W	752mm
	7LED4700/EM/R2	55W Ex d Zone 1 EM Luminaire	LED	5,340lm	55W	1,362mm
	7LED5700/EM/R2	70W Ex d Zone 1 EM Luminaire	LED	6,675lm	70W	1,662mm

Self-Test Emergency	Part Number	Description	Light Source	Light Output	Power Consumption	Size
	7LED1700/EM/ST/R2	15W Ex d Zone 1 EM Luminaire	LED	1,335lm	15W	448mm
	7LED2700/EM/ST/R2	30W Ex d Zone 1 EM Luminaire	LED	2,670lm	30W	752mm
	7LED4700/EM/ST/R2	55W Ex d Zone 1 EM Luminaire	LED	5,340lm	55W	1,362mm
	7LED5700/EM/ST/R2	70W Ex d Zone 1 EM Luminaire	LED	6,675lm	70W	1,662mm

For detailed operation of the semi-intelligent, self-testing emergency options, please refer to publication TB205, available on request.

For safer hazardous areas call us today on

0121 783 7161

sales@petrel-ex.co.uk | www.petrel-ex.co.uk



Petrel
Hazardous Area Lighting Solutions