



Ex solenoid interlock Ex AZM 415 1Ö1S/1Ö1S R

Article no.: 1169104 (old article no.: 94353301)

Product features

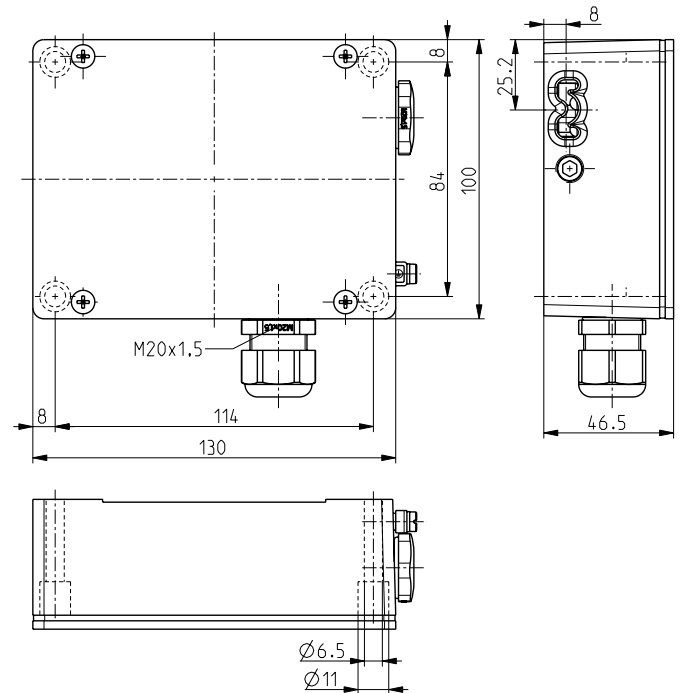


- Ex zone 1 and 21
- Spring-to-lock principle
- Problem-free opening of stressed doors by means of bell-crank system
- High locking force 3500 N
- Ball catch
- Wiring compartment
- Attention: Please state required international approvals with your order!

Notes

- The actuator is not included in the delivery of the switches
- 1 additional cable gland M20x1.5 is included in delivery

Dimensions



Technical data

Applied standards

EN 60947-5-1, EN ISO 14119, EN IEC 60079-0, EN 60079-1, EN IEC 60079-7, EN 60079-18, EN 60079-31, EN ISO 13849-1

Enclosure

aluminium die-cast, enamel finish

Cover

aluminium, enamel finish

Switch type

type 2

Coding level

low coding

Tightening torque

cover screws: 0.5 ... 0.6 Nm

switch inserts M3 screw connection terminals: min. 0.6 Nm

Degree of protection

IP67 (IEC/EN 60529)

B_{10d} (10 % load)

2 million

T_M

max. 20 years

Switch insert

2 x Ex 95

Contact material

silver

Switching system

slow action, positive break NC contacts ⊖

Switching elements

1 NC/1 NO contact + 1 NC/1 NO contact

Connection

screw connection terminals

Cable cross-section

min. 0.2 mm² (AWG 24), max. 1.5 mm² (AWG 16)

Cable entry

2 x M20 x 1.5 (incl. 1 cable gland)

Clamping range

7 ... 12 mm

Rated impulse withstand voltage U_{imp}

4 kV

Rated insulation voltage U_i

250 V

Conventional thermal current I_{the}

6 A

Utilisation category

AC-15; DC-13

Errors and omissions excepted.



Ex solenoid interlock Ex AZM 415 1Ö1S/1Ö1S R

Article no.: 1169104 (old article no.: 94353301)

Technical data (contd.)

Rated operating current/voltage I_e/U_e
enabling/signalling contacts: 6 A/250 VAC; 0.25 A/230 VDC;
direct-current solenoid: 0.08 A / 24 VDC $\pm 10\%$

Short-circuit protection
6 A gG fuse;
direct-current solenoid: 2 A (slow blow)

Power consumption
max. 12 W (250 ms)

Ambient temperature
T6: $-20\text{ }^\circ\text{C} \cdots +40\text{ }^\circ\text{C}$;
T5: $-20\text{ }^\circ\text{C} \cdots +55\text{ }^\circ\text{C}$

Operation cycles
max. 1200/h

Drop-out delay
< 50 ms

Mechanical life
> 1 million operations

Locking force F_{max}
3500 N

Locking force of integrated ball catch
50 - 200 N, adjustable

Impact energy
max. 7 J

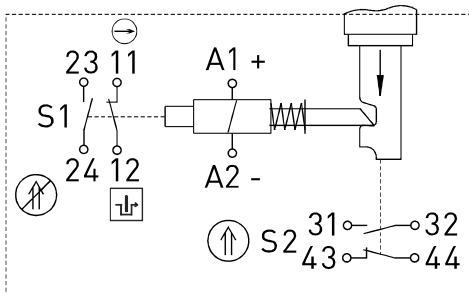
Ex marking
Ⓜ II 2G Ex demb IIC T6/T5 Gb,
Ⓜ II 2D Ex tb IIIC T80°C/T95°C Db IP67/64
IECEX Ex demb IIC T6/T5 Gb,
Ex tb IIIC T80°C/T95°C Db IP67/64

Approvals
DMT 02 ATEX E 255 X
IECEX BVS 07.0018X



Weight
1017 g

Contact diagram



- ⊖ positive break
- Ⓜ actuated
- Ⓜ not actuated
- Ⓜ monitoring of the guard-lock to EN ISO 14119

Errors and omissions excepted.